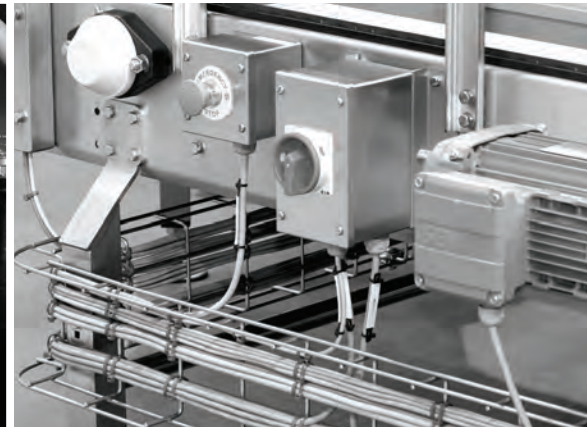




# Stainless Steel Cable Management



## Our History

Based at our purpose built manufacturing facility conveniently located just outside London, England. Lasnek is a premier manufacturer of Stainless Steel Cable Management products.

With over 30 years of engineering expertise in stainless steel fabrication, Lasnek has consistently demonstrated our commitment to quality, service and technical innovation by supplying manufacturing, installation and production companies high quality solutions and components.



UK Head office



Lasnek Chicago facility Aurora IL

## Why Choose Lasnek?

- We specialize in stainless steel fabrication techniques guaranteeing a quality product
- Substantial manufacturing facilities provides control of our extensive inventory
- Our in house design team turn concepts into reality for bespoke applications
- Same day shipping available
- Large US inventory

## Company Commitment

'To provide the highest quality support, from concept and manufacturing to timely supply - our pursuit is excellence in quality stainless steel cable management products.'

**'The pursuit of excellence in the concept, design, manufacture and support of stainless steel cable management products.'**

## Installations Worldwide

- Amway
- Anheuser-Busch
- Arla Foods
- Coca-Cola
- Cott Beverages
- E. & J. Gallo Winery
- GlaxoSmithKline
- Masterfoods
- Nestlé
- Niagara Bottling
- PepsiCo
- Premier Food Group
- Rolls-Royce
- Sunny Delight
- Tetra Pak
- Wrigley

# Steel Cable Management Systems

## Type 1 Enclosed Electrical Wireway 4-19



Flat Cover	4-7
Apex Cover	8-11
Perforated Flat Cover	12-15
Perforated Apex Cover	16-19

## Type 4X Electrical Wireway 20-23



Feed Through Wireway Lengths	20-22
Feed Through Wireway Fittings & Accessories	22-23

## Open Wire Basket Trays 24-27



Wire Tray Lengths	24-26
Wire Tray Fittings & Accessories	27

## Application Specific Fittings and Accessories 28-29



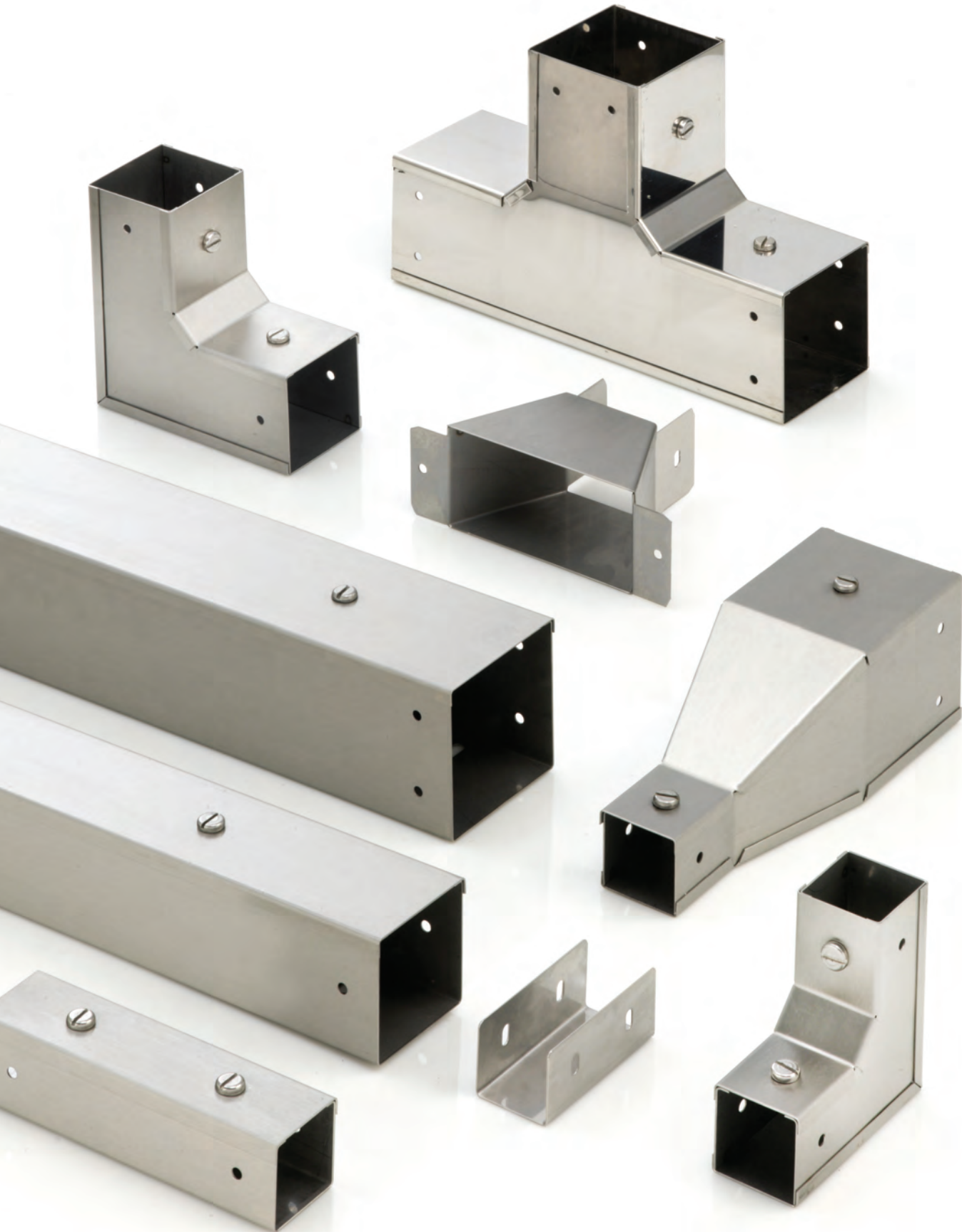
Adjustable Fittings	
Application Accessories	

## Brackets and Supports 30



Trunking, Open Cable Tray, Basket	
-----------------------------------	--

## Notes 31



## KM Series Wireway Key Features

- 3M (10ft) lengths complete with coupler
- Supplied complete with Cover, Coupling & Fixing Screws
- Covers available in three configurations
- Stainless Steel Grade 304 "Food Grade" 1.2mm (18 SWG) thickness
- Shipped in protective plastic coating
- Satin Finish
- Wide Range of fittings and accessories
- Stock available in 2" to 8" widths

## Options Available:

- Larger sizes to 24" wide
- Stainless Steel Grade 316 "Marine Grade"
- Dividers and cable retainers
- Custom fittings and cover configurations



## KM Series Trunking System

...Used extensively in production environments...

- Corrosion resistant
- Suitable for hygienic areas
- Quick and easy to install
- Offers high degree of mechanical protection
- Reduces radiated EMC

## Product Specification:

Material:	304 - 1.4301 Stainless Steel 316 - 1.4404 (optional)
Thickness:	1.2mm (18 SWG)
Finish:	Dull Polish Satin – 220 grit
Standards:	cUL Listed
Availability:	In stock for immediate shipping



**LENGTHS**

All lengths are 3M - (10ft)



## Dimensions

W x H (in)	Weight (lb)	Wireway Ref.	Divider Ref.
2 x 2	14.6	K22-03	X22-03-D
3 x 3	21.4	K33-03	X33-03-D
4 x 4	27.1	K44-03	X44-03-D
6 x 4	33.9	K64-03	X44-03-D
6 x 6	40.6	K66-03	X66-03-D

8" thru 24" also available

**FITTINGS**

Tees - Inside Cover



W x H (in)	Weight (lb)	Wireway Ref.	Divider Ref.
2 x 2	2.0	K22-90	-
3 x 3	3.5	K33-90	X33-90-D-UNI
4 x 4	5.7	K44-90	X44-90-D-UNI
6 x 4	5.0	K64-90	X64-90-D-UNI
6 x 6	6.6	K66-90	X66-90-D-UNI

8" thru 24" also available

Tees - Outside Cover



W x H (in)	Weight (lb)	Wireway Ref.	Divider Ref.
2 x 2	2.0	K22-91	-
3 x 3	3.6	K33-91	X33-91-D-UNI
4 x 4	5.8	K44-91	X44-91-D-UNI
6 x 4	5.1	K64-91	X64-91-D-UNI
6 x 6	6.7	K66-91	X66-91-D-UNI

8" thru 24" also available

Tees - Front Cover



W x H (in)	Weight (lb)	Wireway Ref.	Divider Ref.
2 x 2	2.1	K22-92	-
3 x 3	3.5	K33-92	X33-92-D-UNI
4 x 4	5.9	K44-92	X44-92-D-UNI
6 x 4	5.8	K64-92	X64-92-D-UNI
6 x 6	6.7	K66-92	X66-92-D-UNI

8" thru 24" also available

Bends - 90° Inside Cover



W x H (in)	Weight (lb)	Wireway Ref.	Divider Ref.
2 x 2	1.3	K22-93	-
3 x 3	2.5	K33-93	X33-93-D-UNI
4 x 4	4.0	K44-93	X44-93-D-UNI
6 x 4	3.9	K64-93	X64-93-D-UNI
6 x 6	5.3	K66-93	X66-93-D-UNI

8" thru 24" also available

Bends - 90° Outside Cover



W x H (in)	Weight (lb)	Wireway Ref.	Divider Ref.
2 x 2	1.4	K22-94	-
3 x 3	2.6	K33-94	X33-94-D-UNI
4 x 4	4.2	K44-94	X44-94-D-UNI
6 x 4	4.0	K64-94	X64-94-D-UNI
6 x 6	5.4	K66-94	X66-94-D-UNI


8" thru 24" also available

Bends - 90° Front Cover




W x H (in)	Weight (lb)	Wireway Ref.	Divider Ref.
2 x 2	1.4	K22-95	-
3 x 3	2.5	K33-95	X33-95-D-UNI
4 x 4	4.2	K44-95	X44-95-D-UNI
6 x 4	4.6	K64-95	X64-95-D-UNI
6 x 6	5.3	K66-95	X66-95-D-UNI


8" thru 24" also available

Elbows - 45° Inside Cover	W x H (in)	Weight (lb)	Wireway Ref.	Divider Ref.
	2 x 2	1.3	K22-16	-
	3 x 3	2.2	K33-16	X33-16-D-UNI
	4 x 4	3.6	K44-16	X44-16-D-UNI
	6 x 4	3.2	K64-16	X64-16-D-UNI
	6 x 6	4.1	K66-16	X66-16-D-UNI

8" thru 24" also available


Elbows - 45° Outside Cover	W x H (in)	Weight (lb)	Wireway Ref.	Divider Ref.
	2 x 2	1.3	K22-17	-
	3 x 3	2.2	K33-17	X33-17-D-UNI
	4 x 4	3.6	K44-17	X44-17-D-UNI
	6 x 4	3.3	K64-17	X64-17-D-UNI
	6 x 6	4.0	K66-17	X66-17-D-UNI

8" thru 24" also available


Elbows - 45° Front Cover	W x H (in)	Weight (lb)	Wireway Ref.	Divider Ref.
	2 x 2	1.3	K22-18	-
	3 x 3	2.2	K33-18	X33-18-D-UNI
	4 x 4	3.6	K44-18	X44-18-D-UNI
	6 x 4	3.4	K64-18	X64-18-D-UNI
	6 x 6	4.1	K66-18	X66-18-D-UNI

8" thru 24" also available


## ACCESSORIES

Side Couplings	W x H (in)	Wireway Ref.
	2 x 2	K22-20
	3 x 3	K33-20
	4 x 4	K44-20
	6 x 4	K64-20
	6 x 6	K66-20


8" thru 24" also available

End Caps	W x H (in)	Wireway Ref.
	2 x 2	K22-21
	3 x 3	K33-21
	4 x 4	K44-21
	6 x 4	K64-21
	6 x 6	K66-21


8" thru 24" also available

Straight Couplings	W x H (in)	Wireway Ref.
	2 x 2	X22-22
	3 x 3	X33-22
	4 x 4	X44-22
	6 x 4	X64-22
	6 x 6	X66-22


8" thru 24" also available


Cover Fixing Kits	W x H (in)	Wireway Ref.
	2 x 2	X20-23
	3 x 3	X30-23
	4 x 4	X40-23
	Above 4	XT0-23

8" thru 24" also available

Flange Adaptors - Removable Cover	W x H (in)	Wireway Ref.	Divider Ref.
	2 x 2	K22-25	-
	3 x 3	K33-25	X33-25-D-UNI
	4 x 4	K44-25	X44-25-D-UNI
	6 x 4	K64-25	X64-25-D-UNI
	6 x 6	K66-25	X66-25-D-UNI

8" thru 24" also available

Square Reducers	W x H (in)	Wireway Ref.
	3 x 3	K33S**
	4 x 4	K44S**
	6 x 4	K64S**
	6 x 6	K66S**

Screw Sets	Size	Wireway Ref.
	M6 x 12	X00-24

Dividers not available for 2" fittings







## KS-10 Series Wireway Key Features

- 3M (10ft) lengths complete with coupler
- Supplied Complete with 10 degree Apex Cover, Coupling & Fixing Screws
- Fitting covers available in three configurations
- Stainless Steel Grade 304 "Food Grade" 1.2mm (18 SWG) thickness
- Change of cover direction kits available
- Satin Finish
- Wide range of fittings and accessories
- Stock available in 2" to 6" widths
- Shipped in protective plastic coating

## Options Available:

- Larger sizes from 8" to 24" wide
- Stainless Steel Grade 316 "Marine Grade"
- Dividers and cable retainers
- Custom fittings and cover configurations



## KS-10 Series Apex Wireway System...

...A new slant on a Lasnek favorite

- For use where flat surfaces are prohibited
- Reduction in build up of unwanted debris
- Durable and with high protection to corrosion
- Hygienic and visually appealing
- Easy installation
- Offers high degree of mechanical protection
- Reduces radiated EMC
- Compatible with the Lasnek KM series

## Product Specification:

Material: 304 - 1.4301 Stainless Steel  
316 - 1.4404 (optional)

Thickness: 1.2mm (18 SWG)

Finish: Dull Polish Satin – 220 grit

Standards: cUL Listed

Availability: In stock for immediate shipping



## LENGTHS

All lengths are 3M - (10ft)



Dimensions

W x H (in)	Weight (lb)	Wireway Ref.	Divider Ref.
3 x 3	23.3	K33-03-S10	X33-03-D
4 x 4	30.8	K44-03-S10	X44-03-D
6 x 4	39.6	K64-03-S10	X44-03-D
6 x 6	45.1	K66-03-S10	X66-03-D

8" thru 24" also available

## FITTINGS

Tees - Inside Cover



W x H (in)	Weight (lb)	Wireway Ref.	Divider Ref.
3 x 3	3.6	K33-90-S10	X33-90-D-UNI
4 x 4	5.8	K44-90-S10	X44-90-D-UNI
6 x 4	6.6	K64-90-S10	X64-90-D-UNI
6 x 6	6.7	K66-90-S10	X66-90-D-UNI

8" thru 24" also available

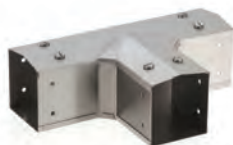
Tees - Outside Cover



W x H (in)	Weight (lb)	Wireway Ref.	Divider Ref.
3 x 3	3.7	K33-91-S10	X33-91-D-UNI
4 x 4	5.8	K44-91-S10	X44-91-D-UNI
6 x 4	6.1	K64-91-S10	X64-91-D-UNI
6 x 6	6.7	K66-91-S10	X66-91-D-UNI

8" thru 24" also available

Tees - Front Cover



W x H (in)	Weight (lb)	Wireway Ref.	Divider Ref.
3 x 3	3.7	K33-92-S10	X33-92-D-UNI
4 x 4	5.9	K44-92-S10	X44-92-D-UNI
6 x 4	5.9	K64-92-S10	X64-92-D-UNI
6 x 6	6.7	K66-92-S10	X66-92-D-UNI

8" thru 24" also available

Bends - 90° Inside Cover



W x H (in)	Weight (lb)	Wireway Ref.	Divider Ref.
3 x 3	2.5	K33-93-S10	X33-93-D-UNI
4 x 4	4.3	K44-93-S10	X44-93-D-UNI
6 x 4	3.9	K64-93-S10	X64-93-D-UNI
6 x 6	5.3	K66-93-S10	X66-93-D-UNI


8" thru 24" also available


Bends - 90° Outside Cover





W x H (in)	Weight (lb)	Wireway Ref.	Divider Ref.
3 x 3	2.5	K33-94-S10	X33-94-D-UNI
4 x 4	4.3	K44-94-S10	X44-94-D-UNI
6 x 4	4.0	K64-94-S10	X64-94-D-UNI
6 x 6	5.5	K66-94-S10	X66-94-D-UNI

8" thru 24" also available


Bends - 90° Front Cover	W x H (in)	Weight (lb)	Wireway Ref.	Divider Ref.
	3 x 3	2.7	K33-95-S10	X33-95-D-UNI
	4 x 4	4.2	K44-95-S10	X44-95-D-UNI
	6 x 4	4.6	K64-95-S10	X64-95-D-UNI
	6 x 6	5.4	K66-95-S10	X66-95-D-UNI
8" thru 24" also available				


Elbows - 45° Inside Cover	W x H (in)	Weight (lb)	Wireway Ref.	Divider Ref.
	3 x 3	2.6	K33-16-S10	X33-16-D-UNI
	4 x 4	3.8	K44-16-S10	X44-16-D-UNI
	6 x 4	3.8	K64-16-S10	X64-16-D-UNI
	6 x 6	4.1	K66-16-S10	X66-16-D-UNI
8" thru 24" also available				


Elbows - 45° Outside Cover	W x H (in)	Weight (lb)	Wireway Ref.	Divider Ref.
	3 x 3	2.6	K33-17-S10	X33-17-D-UNI
	4 x 4	3.7	K44-17-S10	X44-17-D-UNI
	6 x 4	3.3	K64-17-S10	X64-17-D-UNI
	6 x 6	4.4	K66-17-S10	X66-17-D-UNI
8" thru 24" also available				


Elbows - 45° Front Cover	W x H (in)	Weight (lb)	Wireway Ref.	Divider Ref.
	3 x 3	2.2	K33-18-S10	X33-18-D-UNI
	4 x 4	3.0	K44-18-S10	X44-18-D-UNI
	6 x 4	3.4	K64-18-S10	X64-18-D-UNI
	6 x 6	4.4	K66-18-S10	X66-18-D-UNI
8" thru 24" also available				

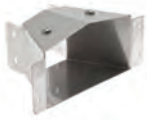
## ACCESSORIES


Side Couplings	W x H (in)	Wireway Ref.
	3 x 3	K33-20
	4 x 4	K44-20
	6 x 4	K64-20
	6 x 6	K66-20
8" thru 24" also available		


End Caps	W x H (in)	Wireway Ref.
	3 x 3	K33-21-S10
	4 x 4	K44-21-S10
	6 x 4	K64-21-S10
	6 x 6	K66-21-S10
8" thru 24" also available		

Straight Couplings	W x H (in)	Wireway Ref.
	3 x 3	X33-22
	4 x 4	X44-22
	6 x 4	X64-22
	6 x 6	X66-22
8" thru 24" also available		

Cover Fixing Kits	W x H (in)	Wireway Ref.
	3	X30-23-S10
	4 and over	XT0-23

Flange Adaptors - Removable Cover	W x H (in)	Wireway Ref.	Divider Ref.
	3 x 3	K33-25-S10	X33-25-D-UNI
	4 x 4	K44-25-S10	X44-25-D-UNI
	6 x 4	K64-25-S10	X64-25-D-UNI
	6 x 6	K66-25-S10	X66-25-D-UNI
8" thru 24" also available			

Square Reducers	W x H (in)	Wireway Ref.
	3 x 3	K33S**
	4 x 4	K44S**
	6 x 4	K64S**
	6 x 6	K66S**
8" thru 24" also available		

Screw Sets	Size	Wireway Ref.
	M6 x 12	X00-24





## TT Series Wireway Key Features

- 3M (10ft) lengths complete with coupler
- Supplied Complete with Cover, Coupling & Fixing Screws
- Covers available in three configurations
- Stainless Steel Grade 304 "Food Grade" 1.2mm (18 SWG) thickness
- Shipped in protective plastic coating
- Satin Finish
- Wide Range of fittings and accessories
- Stock available in 2" to 8" widths

## Options Available:

- Larger sizes to 24" wide
- Stainless Steel Grade 316 "Marine Grade"
- Dividers and cable retainers
- Custom fittings and cover configurations



## TT Series Perforated Wireway

...Used extensively throughout the North American bottling industry...

- Corrosion resistant
- Suitable for hygienic areas
- Quick and easy to install
- Offers high degree of mechanical protection
- Reduces radiated EMC

## Product Specification:

Material: 304 - 1.4301 Stainless Steel  
316 - 1.4404 (optional)

Thickness: 1.2mm (18 SWG)

Finish: Dull Polish Satin – 220 grit

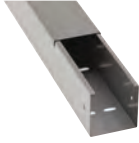
Standards: cUL Listed

Availability: In stock for immediate shipping



## LENGTHS

All lengths are 3M - (10ft)



### Dimensions

W x H (in)	Weight (lb)	Wireway Ref.	Divider Ref.
3 x 3	22.0	TT33-03	XTT33-03-D
4 x 4	27.1	TT44-03	XTT44-03-D
6 x 4	37.4	TT64-03	XTT44-03-D
6 x 6	44.0	TT66-03	XTT66-03-D

8" thru 24" also available

## FITTINGS

Tees - Inside Cover



W x H (in)	Weight (lb)	Wireway Ref.	Divider Ref.
3 x 3	3.5	K33-90	X33-90-D-UNI
4 x 4	5.7	K44-90	X44-90-D-UNI
6 x 4	5.0	K64-90	X64-90-D-UNI
6 x 6	6.6	K66-90	X66-90-D-UNI

8" thru 24" also available

Tees - Outside Cover



W x H (in)	Weight (lb)	Wireway Ref.	Divider Ref.
3 x 3	3.6	K33-91	X33-91-D-UNI
4 x 4	5.8	K44-91	X44-91-D-UNI
6 x 4	5.1	K64-91	X64-91-D-UNI
6 x 6	6.7	K66-91	X66-91-D-UNI

8" thru 24" also available

Tees - Front Cover



W x H (in)	Weight (lb)	Wireway Ref.	Divider Ref.
3 x 3	3.5	K33-92	X33-92-D-UNI
4 x 4	5.9	K44-92	X44-92-D-UNI
6 x 4	5.8	K64-92	X64-92-D-UNI
6 x 6	6.7	K66-92	X66-92-D-UNI

8" thru 24" also available

Bends - 90° Inside Cover



W x H (in)	Weight (lb)	Wireway Ref.	Divider Ref.
3 x 3	2.5	K33-93	X33-93-D-UNI
4 x 4	4.0	K44-93	X44-93-D-UNI
6 x 4	3.9	K64-93	X64-93-D-UNI
6 x 6	5.3	K66-93	X66-93-D-UNI

8" thru 24" also available

Bends - 90° Outside Cover



W x H (in)	Weight (lb)	Wireway Ref.	Divider Ref.
3 x 3	2.6	K33-94	X33-94-D-UNI
4 x 4	4.2	K44-94	X44-94-D-UNI
6 x 4	4.0	K64-94	X64-94-D-UNI
6 x 6	5.4	K66-94	X66-94-D-UNI

8" thru 24" also available

Bends - 90° Front Cover



W x H (in)	Weight (lb)	Wireway Ref.	Divider Ref.
3 x 3	2.5	K33-95	X33-95-D-UNI
4 x 4	4.2	K44-95	X44-95-D-UNI
6 x 4	4.6	K64-95	X64-95-D-UNI
6 x 6	5.3	K66-95	X66-95-D-UNI

8" thru 24" also available

### Elbows - 45° Inside Cover



W x H (in)	Weight (lb)	Wireway Ref.	Divider Ref.
3 x 3	2.2	K33-16	X33-16-D-UNI
4 x 4	3.6	K44-16	X44-16-D-UNI
6 x 4	3.2	K64-16	X64-16-D-UNI
6 x 6	4.0	K66-16	X66-16-D-UNI

8" thru 24" also available

### Elbows - 45° Outside Cover



W x H (in)	Weight (lb)	Wireway Ref.	Divider Ref.
3 x 3	2.2	K33-17	X33-17-D-UNI
4 x 4	3.6	K44-17	X44-17-D-UNI
6 x 4	3.3	K64-17	X64-17-D-UNI
6 x 6	4.0	K66-17	X66-17-D-UNI

8" thru 24" also available

### Elbows - 45° Front Cover



W x H (in)	Weight (lb)	Wireway Ref.	Divider Ref.
3 x 3	2.2	K33-18	X33-18-D-UNI
4 x 4	3.6	K44-18	X44-18-D-UNI
6 x 4	3.4	K64-18	X64-18-D-UNI
6 x 6	4.1	K66-18	X66-18-D-UNI

8" thru 24" also available

## ACCESSORIES

### Side Couplings



W x H (in)	Wireway Ref.
3 x 3	K33-20
4 x 4	K44-20
6 x 4	K64-20
6 x 6	K66-20

8" thru 24" also available

### End Caps



W x H (in)	Wireway Ref.
3 x 3	K33-21
4 x 4	K44-21
6 x 4	K64-21
6 x 6	K66-21

8" thru 24" also available

### Straight Couplings



Size (in)	Wireway Ref.
3 x 3	X33-22
4 x 4	X44-22
6 x 4	X64-22
6 x 6	X66-22

8" thru 24" also available

### Cover Fixing Kits



Size (in)	Wireway Ref.
3 x 3	X30-23
4 x 4	X40-23
over 4	XT0-23

8" thru 24" also available

### Flange Adapter -

#### Removable Cover



W x H (in)	Wireway Ref.	Divider Ref.
3 x 3	K33-25	X33-25-D-UNI
4 x 4	K44-25	X44-25-D-UNI
6 x 4	K64-25	X64-25-D-UNI
6 x 6	K66-25	X66-25-D-UNI

8" thru 24" also available

### Square Reducers



W x H (in)	Wireway Ref.
3 x 3	K33S**
4 x 4	K44S**
6 x 4	K64S**
6 x 6	K66S**

8" thru 24" also available

### Screw Sets



Size	Wireway Ref.
M6 x 12	X00-24

STOCKED IN THE US





## TT-S10 Series Wireway Key Features

- 3M (10ft) lengths complete with coupler
- Supplied complete with 10 degree Apex Cover and screws/nuts
- Fitting covers available in three configurations
- Stainless Steel Grade 304 "Food Grade" 1.2mm (18 SWG) thickness
- Change of cover direction kits available
- Satin Finish
- Wide range of fittings and accessories
- Stock available in 2" to 6" widths
- Shipped in protective plastic coating

## Options Available:

- Larger sizes from 8" to 24" wide
- Stainless Steel Grade 316 "Marine Grade"
- Dividers and cable retainers
- Custom fittings and cover configurations



## TT-S10 Series Perforated Apex Wireway

...One system  
all the features...

- For use where flat surfaces are prohibited
- Reduction in build up of unwanted debris
- Durable and with high protection to corrosion
- Hygienic and aesthetically pleasing
- Easy installation
- Offers high degree of mechanical protection
- Reduces radiated EMC
- Compatible with the Lasnek TT series

## Product Specification:

Material: 304 - 1.4301 Stainless Steel  
316 - 1.4404 (optional)

Thickness: 1.2mm (18 SWG)

Finish: Dull Polish Satin – 220 grit

Standards: cUL Listed

Availability: In stock for immediate shipping



STOCKED IN THE US

## LENGTHS

All lengths are 3M - (10ft)



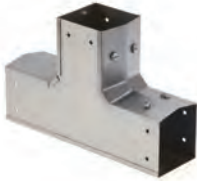
### Dimensions

W x H (in)	Weight (lb)	Wireway Ref.	Divider Ref.
3 x 3	23.3	TT33-03-S10	XTT33-03-D
4 x 4	29.9	TT44-03-S10	XTT44-03-D
6 x 4	38.5	TT64-03-S10	XTT44-03-D
6 x 6	44.5	TT66-03-S10	XTT66-03-D

8" thru 24" also available

## FITTINGS

### Tees - Inside Cover



W x H (in)	Weight (lb)	Wireway Ref.	Divider Ref.
3 x 3	3.6	K33-90-S10	X33-90-D-UNI
4 x 4	5.5	K44-90-S10	X44-90-D-UNI
6 x 4	6.6	K64-90-S10	X64-90-D-UNI
6 x 6	6.7	K66-90-S10	X66-90-D-UNI

8" thru 24" also available

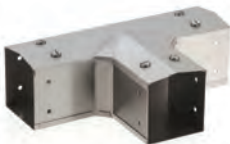
### Tees - Outside Cover



W x H (in)	Weight (lb)	Wireway Ref.	Divider Ref.
3 x 3	3.7	K33-91-S10	X33-91-D-UNI
4 x 4	5.8	K44-91-S10	X44-91-D-UNI
6 x 4	6.1	K64-91-S10	X64-91-D-UNI
6 x 6	6.7	K66-91-S10	X66-91-D-UNI

8" thru 24" also available

### Tees - Front Cover



W x H (in)	Weight (lb)	Wireway Ref.	Divider Ref.
3 x 3	3.7	K33-92-S10	X33-92-D-UNI
4 x 4	5.9	K44-92-S10	X44-92-D-UNI
6 x 4	5.9	K64-92-S10	X64-92-D-UNI
6 x 6	6.7	K66-92-S10	X66-92-D-UNI

8" thru 24" also available

### Bends - 90° Inside Cover



W x H (in)	Weight (lb)	Wireway Ref.	Divider Ref.
3 x 3	2.5	K33-93-S10	X33-93-D-UNI
4 x 4	4.3	K44-93-S10	X44-93-D-UNI
6 x 4	3.9	K64-93-S10	X64-93-D-UNI
6 x 6	5.3	K66-93-S10	X66-93-D-UNI


8" thru 24" also available

### Bends - 90° Outside Cover




W x H (in)	Weight (lb)	Wireway Ref.	Divider Ref.
3 x 3	2.5	K33-94-S10	X33-94-D-UNI
4 x 4	4.3	K44-94-S10	X44-94-D-UNI
6 x 4	4.0	K64-94-S10	X64-94-D-UNI
6 x 6	5.5	K66-94-S10	X66-94-D-UNI


8" thru 24" also available

Bends - 90° Front Cover	W x H (in)	Weight (lb)	Wireway Ref.	Divider Ref.
	3 x 3	2.7	K33-95-S10	X33-95-D-UNI
	4 x 4	4.2	K44-95-S10	X44-95-D-UNI
	6 x 4	4.6	K64-95-S10	X64-95-D-UNI
	6 x 6	5.4	K66-95-S10	X66-95-D-UNI


8" thru 24" also available

Elbows - 45° Inside Cover	W x H (in)	Weight (lb)	Wireway Ref.	Divider Ref.
	3 x 3	2.6	K33-16-S10	X33-16-D-UNI
	4 x 4	3.8	K44-16-S10	X44-16-D-UNI
	6 x 4	3.8	K64-16-S10	X64-16-D-UNI
	6 x 6	4.1	K66-16-S10	X66-16-D-UNI

8" thru 24" also available


Elbows - 45° Outside Cover	W x H (in)	Weight (lb)	Wireway Ref.	Divider Ref.
	3 x 3	2.6	K33-17-S10	X33-17-D-UNI
	4 x 4	3.7	K44-17-S10	X44-17-D-UNI
	6 x 4	3.3	K64-17-S10	X64-17-D-UNI
	6 x 6	4.4	K66-17-S10	X66-17-D-UNI

8" thru 24" also available


Elbows - 45° Front Cover	W x H (in)	Weight (lb)	Wireway Ref.	Divider Ref.
	3 x 3	2.2	K33-18-S10	X33-18-D-UNI
	4 x 4	3.0	K44-18-S10	X44-18-D-UNI
	6 x 4	3.4	K64-18-S10	X64-18-D-UNI
	6 x 6	4.4	K66-18-S10	X66-18-D-UNI

8" thru 24" also available


## ACCESSORIES

Side Couplings	W x H (in)	Wireway Ref.
	3 x 3	K33-20
	4 x 4	K44-20
	6 x 4	K64-20
	6 x 6	K66-20

8" thru 24" also available


End Caps	W x H (in)	Wireway Ref.
	3 x 3	K33-21-S10
	4 x 4	K44-21-S10
	6 x 4	K64-21-S10
	6 x 6	K66-21-S10

8" thru 24" also available


Straight Couplings	Size (in)	Wireway Ref.
	3 x 3	X33-22
	4 x 4	X44-22
	6 x 4	X64-22
	6 x 6	X66-22

8" thru 24" also available


Cover Fixing Kits	Size (in)	Wireway Ref.
	3 x 3	X30-23-S10
	4 x 4	X40-23-S10
	over 4	XT0-23-S10

Flange Adapter - Removable Cover	W x H (in)	Wireway Ref.	Divider Ref.
	3 x 3	K33-25-S10	X33-25-D-UNI
	4 x 4	K44-25-S10	X44-25-D-UNI
	6 x 4	K64-25-S10	X64-25-D-UNI
	6 x 6	K66-25-S10	X66-25-D-UNI

8" thru 24" also available

Square Reducers	W x H (in)	Wireway Ref.
	3 x 3	K33S**
	4 x 4	K44S**
	6 x 4	K64S**
	6 x 6	K66S**

8" thru 24" also available

Screw Sets	Size	Wireway Ref.
	M6 x 12	X00-24

**STOCKED IN THE US**



## FT Series Wireway Key Features

- UL Listed type 4X wireway
- Choice of Lengths 1ft, 2ft, 5ft or 10ft with gasket
- Stainless Steel Grade 304 "Food Grade"  
1.5mm (16 SWG) - 2mm (14 SWG) for 8"
- Inside dimensions available 2.5", 4", 6" or 8"
- Lengths complete with retained hinge
- 4mm (8 SWG) stainless steel flanges supplied with gasket & hardware

## Options Available:

- Stainless Steel Grade 316 "Marine Grade"
- Length dividers
- Mounting brackets



## FT Series 4X Wireway

## ...The Ultimate Watertight Wireway System...

- For use in areas subject to pressure washing
- Designed for hygienic environments
- Suitable for aggressive atmospheres
- High degree of mechanical cable protection
- Easy to install with proven repeatability

## Product Specification:

Material: 1.5mm (16 SWG) 304 Stainless Steel

Flanges: 4mm (8 SWG) 304 Stainless Steel

Finish: Matt – no grain

Lengths: 1ft / 2ft / 5ft / 10ft with cover gasket  
pre fitted





Flange Kit: Included, 1 per length & fitting

Sizes: 2½", 4", 6" (8" on request)


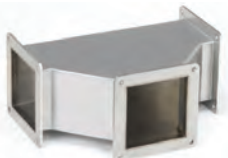
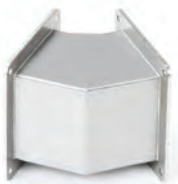
Standard: cUL Listed





## LENGTHS


	Dimensions		
	WxH (in)	Weight (lb)	Wireway Ref.
<b>1ft Straight - Hinged</b> 	2½ x 2½	3.9	FT22-LI-012-H
	4 x 4	5.5	FT44-LI-012-H
	6 x 6	7.9	FT66-LI-012-H
<b>2ft Straight - Hinged</b> 	2½ x 2½	6.6	FT22-LI-024-H
	4 x 4	9.3	FT44-LI-024-H
	6 x 6	13.4	FT66-LI-024-H
<b>5ft Straight - Hinged</b> 	2½ x 2½	14.9	FT22-LI-060-H
	4 x 4	21.2	FT44-LI-060-H
	6 x 6	30.3	FT66-LI-060-H
<b>10ft Straight - Hinged</b> 	2½ x 2½	28.6	FT22-LI-120-H
	4 x 4	40.9	FT44-LI-120-H
	6 x 6	58.5	FT66-LI-120-H

## FITTINGS


<b>90° Bend</b> 	WxH (in)	Weight (lb)	Wireway Ref.
	2½ x 2½	2.5	FT22-GB-90-F
	4 x 4	4.0	FT44-GB-90-F
	6 x 6	6.6	FT66-GB-90-F
<b>Tee Piece</b> 	WxH (in)	Weight (lb)	Wireway Ref.
	2½ x 2½	4.0	FT22-GT-F
	4 x 4	4.5	FT44-GT-F
	6 x 6	9.5	FT66-GT-F
<b>22.5° Bend</b> 	WxH (in)	Weight (lb)	Wireway Ref.
	2½ x 2½	1.6	FT22-GB-22.5-F
	4 x 4	2.5	FT44-GB-22.5-F
	6 x 6	3.8	FT66-GB-22.5-F


45° Bend	WxH (in)	Weight (lb)	Wireway Ref.
	2 1/2 x 2 1/2	1.7	FT22-GB-45-F
	4 x 4	3.1	FT44-GB-45-F
	6 x 6	4.1	FT66-GB-45-F


Y Adapter	WxH (in)	Weight (lb)	Wireway Ref.
	2 1/2 x 2 1/2	2.0	FT22-YA-F
	4 x 4	2.9	FT44-YA-F
	6 x 6	4.0	FT66-YA-F


Cut Down Unit	WxH (in)	Weight (lb)	Wireway Ref.
	2 1/2 x 2 1/2	3.0	FT22-CO-012
	4 x 4	4.5	FT44-CO-012
	6 x 6	6.7	FT66-CO-01


## ACCESSORIES

Y Box Connector	WxH (in)	Weight (lb)	Wireway Ref.
	2 1/2 x 2 1/2	0.4	FT22-YA-BC
	4 x 4	0.5	FT44-YA-BC
	6 x 6	0.7	FT66-YA -BC

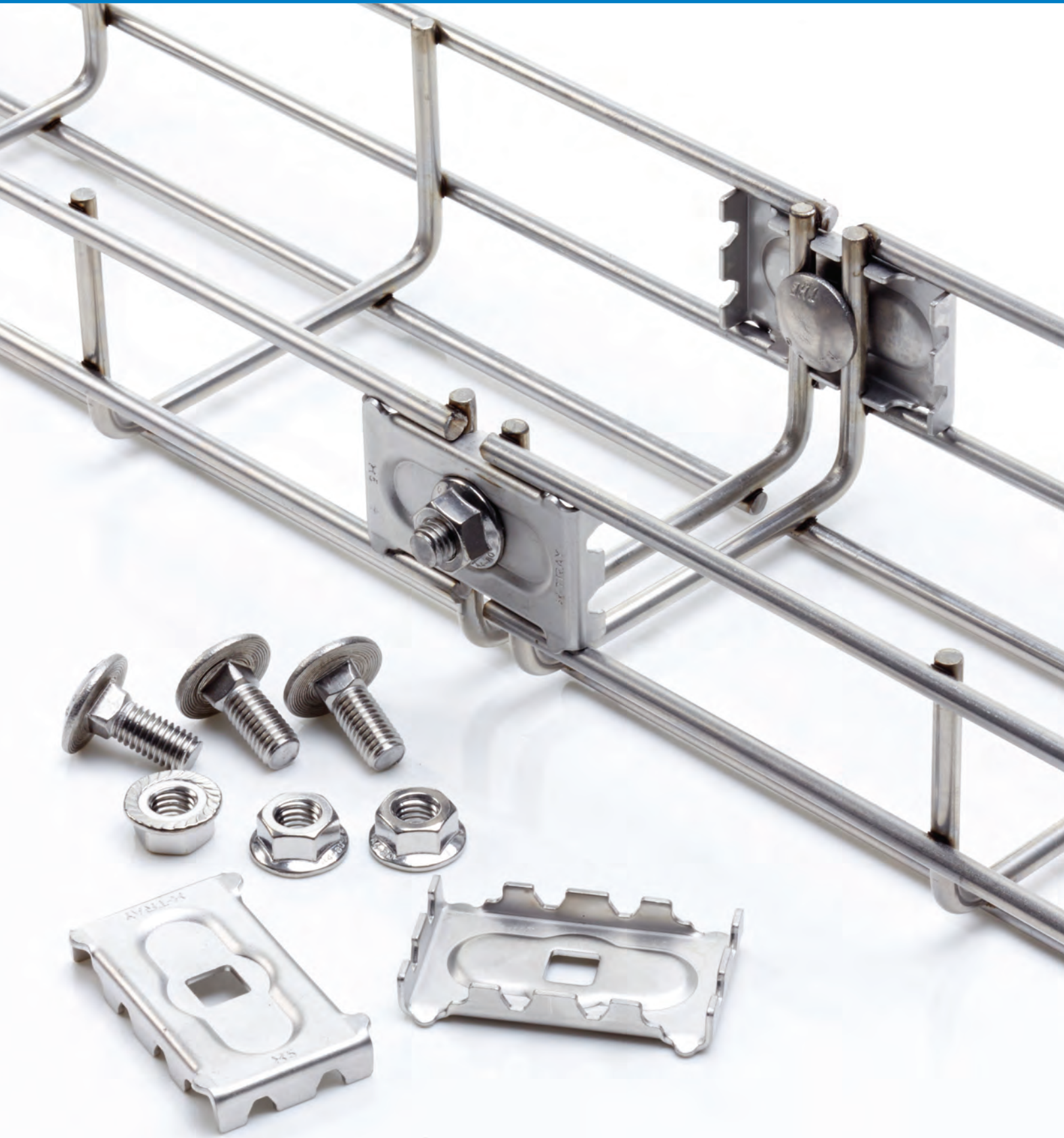
Closure Plate	WxH (in)	Weight (lb)	Wireway Ref.
	2 1/2 x 2 1/2	0.7	FT22-CP
	4 x 4	1.2	FT44-CP
	6 x 6	2.3	FT66-CP

Box Connector	WxH (in)	Weight (lb)	Wireway Ref.
	2 1/2 x 2 1/2	0.5	FT22-BC
	4 x 4	0.7	FT44-BC
	6 x 6	1.1	FT66-BC

Edge Reducer	WxH (in)	Weight (lb)	Wireway Ref.
	4 x 4 to 2 x 2	0.4	FT44-22-REH
	6 x 6 to 4 x 4	0.8	FT66-44-REH

Center Reducer	WxH (in)	Weight (lb)	Wireway Ref.
	4 x 4 to 2 x 2	0.4	FT44-22-RCH
	6 x 6 to 4 x 4	0.8	FT66-44-RCH





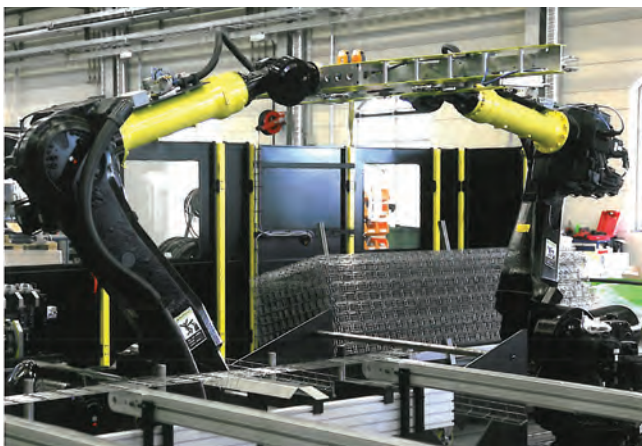


## Wire Basket Tray Features:

- Easy transportation using 2.5M (8<sup>1</sup>/<sub>4</sub> ft) length
- Choice of nine different widths ranging from 2" to 24"
- Additional strength with wire thickness of 8 SWG to 4 SWG
- Reduced deflection with side profile heights of 2" & 4"
- Easy cable clamping with a minimum of two wires in the base for widths >6"
- Additional strength with M8 and unique coupler giving free location of any joint
- All fixings and lengths in stainless steel grade 316 with the addition option of stainless steel grade 304 lengths only

## Applications include

- Food Processing - Low Level Process Environments
- Machinery - Production Line Equipment
- Civil Works - Tunnels and Bridges
- Oil & Gas - On Shore and Offshore
- Marine - Commercial and Naval



## Wire Basket Cable Tray

... Quality and strength, a winning combination...

- Designed specifically for process environments
- Ideal for installations at lower levels
- Variable support distances up to 6<sup>1</sup>/<sub>2</sub>ft
- Quick installation with independent location of any coupler
- Robust construction using the latest robotic induction welding techniques
- Minimal deflection levels with a choice of two wall profiles
- Choice of nine widths with a diverse range of fixings and accessories

## Product Specification:

Material : 304 - 1.4301 Stainless Steel (lengths only)  
316 - 1.4404 (optional)

Lengths: 8<sup>1</sup>/<sub>4</sub>ft  
Width / Wire Diameter  
2" - 3" / 0.16"  
4" - 12" / 0.20"  
16" - 24" / 0.24"

Side Profile: 2" or 4"

Fittings & Fixings: 316 - 1.4404

Standards: cUL Listed  
IEC61537



STOCKED IN THE US

**LENGTHS**

All wire basket lengths are 8 1/4 ft



Dimensions

W x H (in)	Weight (lb)	304 Ref.	316 Ref.
2 x 2	3.7	XE-053-046-304	XE-053-046-316
3 x 2	4.4	XE-075-060-304	XE-075-060-316
4 x 2	6.7	XE-100-060-304	XE-100-060-316
6 x 2	7.2	XE-150-060-304	XE-150-060-316
8 x 2	9.6	XE-220-060-304	XE-220-060-316
12 x 2	12.2	XE-320-060-304	XE-320-060-316
16 x 2	16.8	XE-420-060-304	XE-420-060-316

W x H (in)	Weight (lb)	304 Ref.	316 Ref.
6 x 4	7.2	XE-150-110-304	XE-150-110-316
8 x 4	12.4	XE-220-110-304	XE-220-110-316
12 x 4	15.1	XE-320-110-304	XE-320-110-316
16 x 4	20.6	XE-420-110-304	XE-420-110-316
20 x 4	24.0	XE-520-110-304	XE-520-110-316
24 x 4	27.3	XE-620-110-304	XE-620-110-316

**JOINER SELECTION**

X5 JOINERS

53-220



X5 x2

420



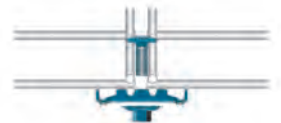
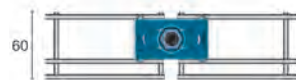
X5 x4

320



X5 x3

60



Request an Installation Guide  
1-866-995-9337



## FITTINGS & ACCESSORIES

Hold Down Clamp	WxHxL (in)	Weight (lb/pk)	Part Ref.
* use with 2" x 2" basket	1 3/4 x 1 3/4	0.15	XE-X1-PK-6
Pack Quantity 6			



Bend Clamp	WxHxL (in)	Weight (lb/pk)	Part Ref.
	1 x 1 1/4 x 1/2	0.80	XE-X2-PK-6
Pack Quantity 6			



Angle Bracket	WxHxL (in)	Weight (lb/pk)	Part Ref.
	3 x 3 x 2	1.20	XE-X3-PK-6
Pack Quantity 6			



Hold Down Clamp	WxHxL - mm	Weight (lb/pk)	Part Ref.
	2 x 2 3/4 x 2	0.70	XE-X4-PK-6
Pack Quantity 6			



Length Joiner	WxHxL (in)	Weight (lb/pk)	Part Ref.
* c/w nut and bolt	1 1/4 x 1/4 x 2	0.62	XE-X5-PK-6
Pack Quantity 6			



Nut & Bolts Pack	Pack Size	Weight (lb/pk)	Part Ref.
	20*	1.00	XE-X6162-20
	40*	2.10	XE-X6162-40



\* dependent on mounting configuration

Maxi Bracket	WxHxL (in)	Weight (lb/pk)	Part Ref.
* use with 4" thru 8"	3 3/4 x 3 3/4 x 1	1.90	XE-X10-MAXI-PK-6
Pack Quantity 6			



Midi Bracket	WxHxL (in)	Weight (lb/pk)	Part Ref.
* use with 3" & 4"	3 3/4 x 1 x 2 1/2	0.80	XE-X10-MIDI-PK-6
Pack Quantity 6			



Mini Bracket	WxHxL (in)	Weight (lb/pk)	Part Ref.
* use with 2" & 3"	2 1/4 x 3 3/4 x 1	0.80	XE-X10-MINI-PK-6
Pack Quantity 6			



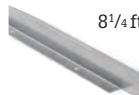
Accessories Holder	WxHxL (in)	Weight (lb/pk)	Part Ref.
	6 3/4 x 5 3/4 x 1	0.40	XE-X63-1
Pack Quantity 1			



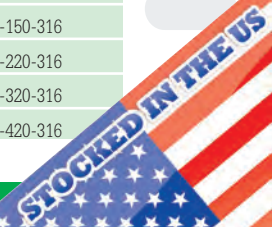
Cantilever Bracket	HxWxL (in)	Weight (lb/pk)	Part Ref.
	3 1/2 x 1 1/2 x 2 1/2	0.22	A-BWB053
	3 1/2 x 1 1/2 x 3 1/4	0.24	A-BWB075
	3 1/2 x 1 1/2 x 4 1/4	0.31	A-BWB100
	3 1/2 x 1 1/2 x 6 1/4	0.40	A-BWB150
	3 1/2 x 1 1/2 x 9	0.55	A-BWB220
	3 1/2 x 1 1/2 x 12 1/2	0.68	A-BWB320
	3 1/2 x 1 1/2 x 17	0.93	A-BWB420
Pack Quantity 1			



Length Divider	Height (in)	Weight (lb/pk)	Part Ref.
8 1/4 ft	2	2.90	XE-X64-45
	4	4.60	XE-X64-95
Pack Quantity 1			



Length Cover	Width (in)	Weight (lb/pk)	Part Ref.
3ft	3	3.10	XE-X65-075-316
	4	4.00	XE-X65-100-316
	6	4.60	XE-X65-150-316
	9	6.20	XE-X65-220-316
	12	8.10	XE-X65-320-316
	16	11.50	XE-X65-420-316
Pack Quantity 1			



## Application Specific Fittings & Accessories

...Labor saving products designed to reduce install costs...

### Adjustable Fittings

- For use where non standard angles are required
- Compatible with all Type 1 Wireway systems
- Choice of Flat or Apex covers
- Available in front, outside and inside cover configurations
- Variable fixing position 0 – 30 degrees
- Reduces on site fabrication time
- Dividers available
- Simple and quick to install

#### **Adjustable Fittings Key Features:**

- Forms additional fitting angles on site without specialist tools
- Suitable for Flat or Apex cover Type 1 Wireway
- Provides consistent finish when aligned with lengths or fittings
- Available with inside, outside and front cover configurations
- Supplied with Cover, Coupler and Fixings Screws
- Suitable for installations utilising 2", 3" and 4" widths

#### **Typical Applications Include**

- Incline / decline conveyors
- Radius routing on rotary equipment
- Muti-lane conveyor routings
- Routing on awkward structural supports

### Change of Cover Kits

- Offers the facility to rotate a Flat cover following the transition from Apex cover
- For the transition from Flat to Apex cover Wireway (change of cover)
- Provides a continuous level cover
- Compatible with Lasnek Apex Wireway

#### **Change of Cover Kit Key Features**

- Satin finish 304 Stainless Steel
- Connects Lasnek Type 1 Flat to Apex Wireway
- Allows transition with the cover in the same plane
- Supplied with universal rotation coupler
- Rotational coupler when used separately can connect and rotate flat cover wireway


### Drop Flange Adapter


- Quick and easy connection of vertical to horizontal routed wireway
- Pre cut Adapter plate fits over the wireway trough in place of the standard wireway cover
- Connected to the vertical wireway by a standard Y / Flange Adapter fitting (K\*\*-25)


#### **Drop Flange Adapter Key Features**

- Removes the requirement for installing a Tee fitting
- Reduces the requirement for cut pieces
- Easy alignment of cover

## ADJUSTABLE FITTINGS


Inside Cover	Dimensions			
	W x H (in)	Weight (lb)	Wireway Ref.	Divider Ref.
	2 x 2	1.91	K22-16-ADJ	X22-16-ADJ-D-UNI
	3 x 3	3.32	K33-16-ADJ	X33-16-ADJ-D-UNI
	4 x 4	4.55	K44-16-ADJ	X44-16-ADJ-D-UNI

Outside Cover	Dimensions			
	W x H (in)	Weight (lb)	Wireway Ref.	Divider Ref.
	2 x 2	1.91	K22-17-ADJ	X22-17-ADJ-D-UNI
	3 x 3	3.32	K33-17-ADJ	X33-17-ADJ-D-UNI
	4 x 4	4.55	K44-17-ADJ	X44-17-ADJ-D-UNI


Front Cover	Dimensions			
	W x H (in)	Weight (lb)	Wireway Ref.	Divider Ref.
	2 x 2	1.91	K22-18-ADJ	X22-18-ADJ-D-UNI
	3 x 3	3.32	K33-18-ADJ	X33-18-ADJ-D-UNI
	4 x 4	4.55	K44-18-ADJ	X44-18-ADJ-D-UNI


\* Also available in Apex Cover

## APPLICATION ACCESSORIES

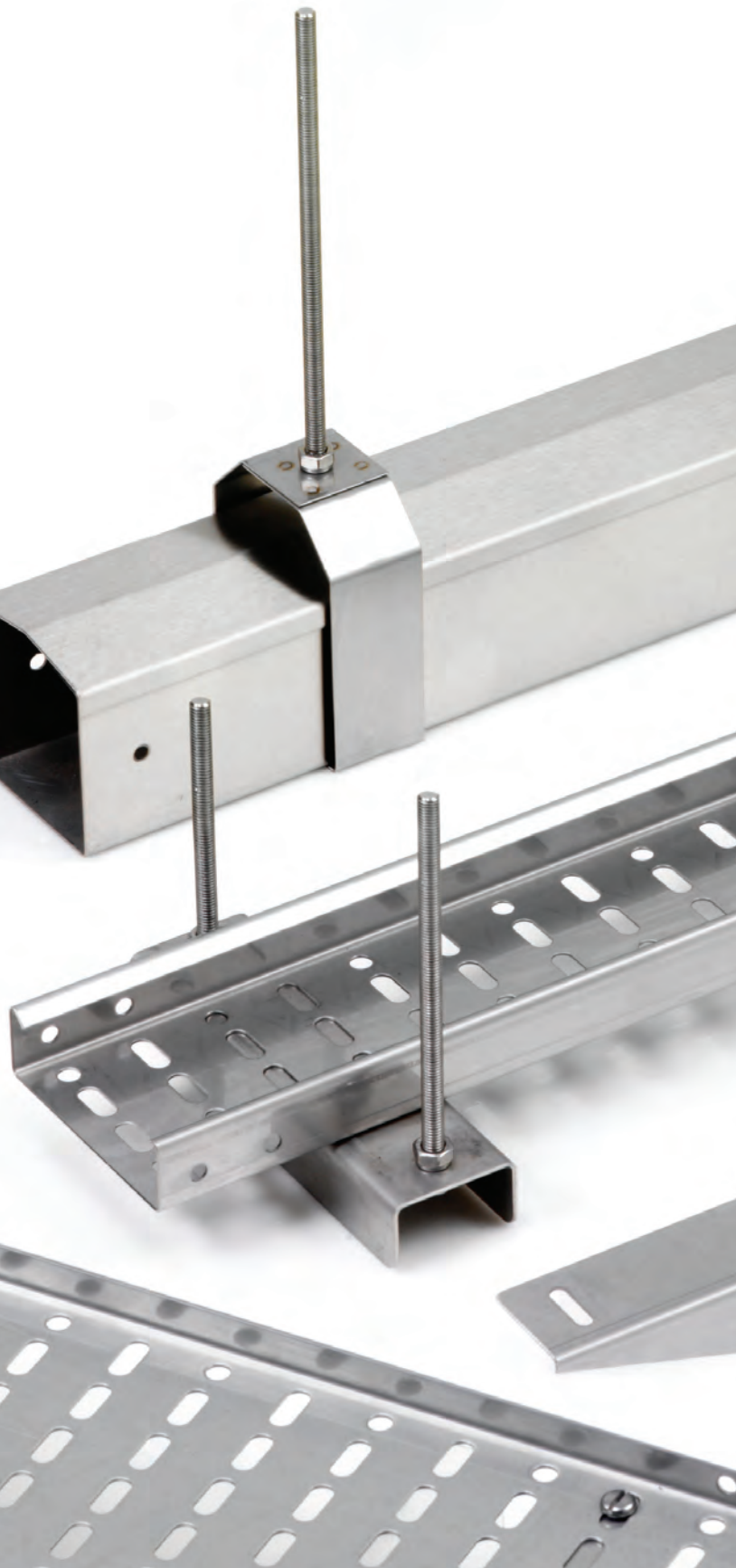
Change of Cover Kit	Dimensions		
	W x H (in)	Weight (lb)	Wireway Ref.
	3 x 3	1.17	K33-S10-CH-COV-K33
	4 x 4	1.55	K44-S10-CH-COV-K44
	6 x 6	2.07	K66-S10-CH-COV-K66

6" Piece complete with Rotation Coupler

Change of Rotation Coupler	Dimensions		
	W x H (in)	Weight (lb)	Wireway Ref.
	3 x 3	0.46	K33-22-R
	4 x 4	0.67	K44-22-R
	6 x 6	0.98	K66-22-R

Drop Flange Adapter	Dimensions		
	Width (in)	Weight (lb)	Wireway Ref.
	2	0.44	K22-27
	3	0.66	K33-27
	4	0.88	K44-27
	6	1.10	K66-27







## Brackets and Supports

...When it all hangs on Quality...

Range of individually developed Brackets specifically for use with the Lasnek ranges...

- Wireway
- Open Cable Tray
- Basket

Wall Bracket	HxL (in)	Weight (lb)	304 Ref.	316 Ref.
	2 x 2	0.5	TWB050	A-TWB050
	2 x 3	0.8	TWB075	A-TWB075
	2 x 4	0.8	TWB100	A-TWB100
	2 x 6	0.11	TWB150	A-TWB150
	2 x 8	0.27	TWB225	A-TWB225

Stirrup Hanger Bracket	HxL (in)	Weight (lb)	304 Ref.	316 Ref.
	2 x 2	0.1	SHB050	A-SHB050
	3 x 3	0.14	SHB075	A-SHB075
	4 x 4	0.18	SHB100	A-SHB100
	6 x 6	0.27	SHB150	A-SHB150





1005 N Commons Dr  
Aurora IL 60504

Tel: 1-866-995-9337

email: [sales@lasnek.com](mailto:sales@lasnek.com)  
[www.lasnek.com](http://www.lasnek.com)

