



Stainless Steel Cable Management



Our History

Based at our purpose built manufacturing facility conveniently located just outside London, England. Lasnek is a premier manufacturer of Stainless Steel Cable Management products.

With over 30 years of engineering expertise in stainless steel fabrication, Lasnek has consistently demonstrated our commitment to quality, service and technical innovation by supplying manufacturing, installation and production companies high quality solutions and components.



UK Head office



Lasnek Chicago facility Aurora IL

Why Choose Lasnek?

- We specialize in stainless steel fabrication techniques guaranteeing a quality product
- Substantial manufacturing facilities provides control of our extensive inventory
- Our in house design team turn concepts into reality for bespoke applications
- Same day shipping available
- Large US inventory

Company Commitment

'To provide the highest quality support, from concept and manufacturing to timely supply – our pursuit is excellence in quality stainless steel cable management products.'

'The pursuit of excellence in the concept, design, manufacture and support of stainless steel cable management products.'

Installations Worldwide

- | | |
|------------------------|----------------------|
| • Amway | • Nestlé |
| • Anheuser-Busch | • Niagara Bottling |
| • Arla Foods | • PepsiCo |
| • Coca-Cola | • Premier Food Group |
| • Cott Beverages | • Rolls-Royce |
| • E. & J. Gallo Winery | • Sunny Delight |
| • GlaxoSmithKline | • Tetra Pak |
| • Masterfoods | • Wrigley |

Steel Cable Management Systems

Type 1 Enclosed Electrical Wireway

4-21



Flat Cover	4-7
Apex Cover	8-11
Perforated Flat Cover	12-15
Perforated Apex Cover	16-19
Accessories	20-21

Type 4X Electrical Wireway

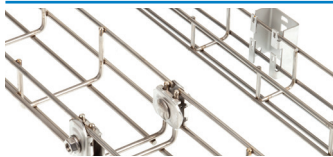
22-25



Feed Through Wireway Lengths	22-24
Feed Through Wireway Fittings & Accessories	24-25

Open Wire Basket Trays

26-29



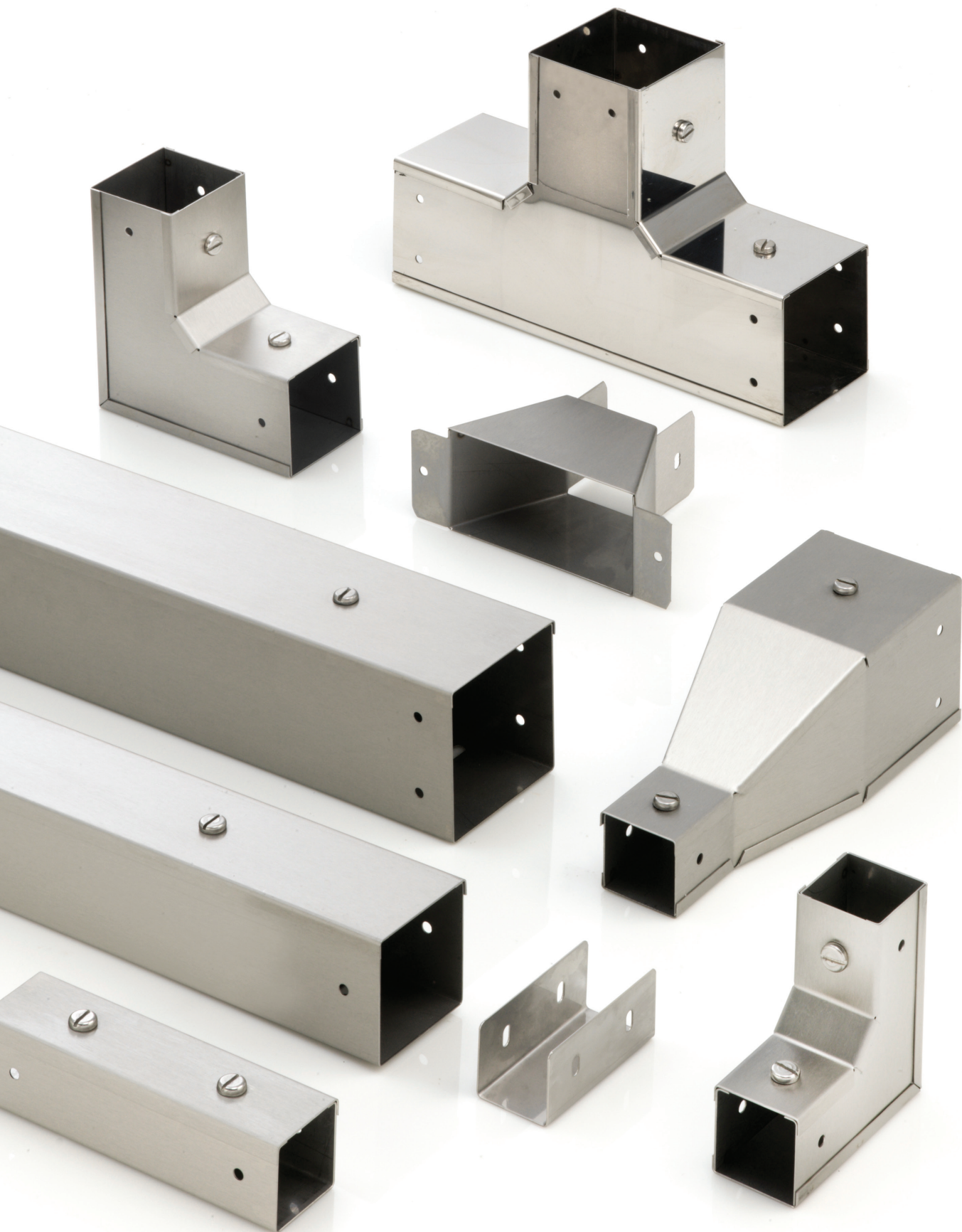
Wire Tray Lengths	26-28
Wire Tray Fittings & Accessories	29

Brackets & Supports

30-31



Offset Brackets	
Cantilever Brackets	
Stirrup Hanging Bracket	
Universal Stand Off Support Brackets	
Channel Hanging Brackets	



KM Series Wireway Key Features

- 3M (10ft) lengths complete with coupler
- Supplied complete with Cover, Coupling & Fixing Screws
- Covers available in three configurations
- Stainless Steel Grade 304 "Food Grade" 1.2mm (18 SWG) thickness
- Shipped in protective plastic coating
- Satin Finish
- Wide range of fittings and accessories
- Stock available in 2" to 8" widths

Options Available:

- Larger sizes to 24" wide
- Stainless Steel Grade 316 "Marine Grade"
- Dividers and cable retainers
- Custom fittings and cover configurations



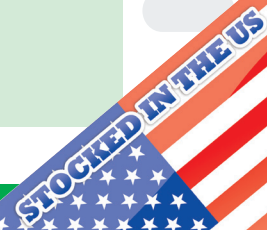
KM Series Trunking System

...Used extensively
in production
environments...

- Corrosion resistant
- Suitable for hygienic areas
- Quick and easy to install
- Offers high degree of mechanical protection
- Reduces radiated EMC

Product Specification:

Material:	304 - 1.4301 Stainless Steel 316 - 1.4404 (optional)
Thickness:	1.2mm (18 SWG)
Finish:	Dull Polish Satin – 220 grit
Standards:	cUL Listed
Availability:	In stock for immediate shipping



LENGTHS

All lengths are 3M - (10ft)



Dimensions

W x H (in)	Weight (lb)	Wireway Ref.	Divider Ref.
2 x 2	14.6	K22-03	X22-03-D
3 x 3	21.4	K33-03	X33-03-D
4 x 4	27.1	K44-03	X44-03-D
6 x 4	33.9	K64-03	X44-03-D
6 x 6	40.6	K66-03	X66-03-D

8" thru 24" also available

FITTINGS

Tees - Inside Cover



W x H (in)	Weight (lb)	Wireway Ref.	Divider Ref.
2 x 2	2.0	K22-90	-
3 x 3	3.5	K33-90	X33-90-D-UNI
4 x 4	5.7	K44-90	X44-90-D-UNI
6 x 4	5.0	K64-90	X64-90-D-UNI
6 x 6	6.6	K66-90	X66-90-D-UNI

8" thru 24" also available

Tees - Outside Cover



W x H (in)	Weight (lb)	Wireway Ref.	Divider Ref.
2 x 2	2.0	K22-91	-
3 x 3	3.6	K33-91	X33-91-D-UNI
4 x 4	5.8	K44-91	X44-91-D-UNI
6 x 4	5.1	K64-91	X64-91-D-UNI
6 x 6	6.7	K66-91	X66-91-D-UNI

8" thru 24" also available

Tees - Front Cover



W x H (in)	Weight (lb)	Wireway Ref.	Divider Ref.
2 x 2	2.1	K22-92	-
3 x 3	3.5	K33-92	X33-92-D-UNI
4 x 4	5.9	K44-92	X44-92-D-UNI
6 x 4	5.8	K64-92	X64-92-D-UNI
6 x 6	6.7	K66-92	X66-92-D-UNI

8" thru 24" also available

Bends - 90° Inside Cover



W x H (in)	Weight (lb)	Wireway Ref.	Divider Ref.
2 x 2	1.3	K22-93	-
3 x 3	2.5	K33-93	X33-93-D-UNI
4 x 4	4.0	K44-93	X44-93-D-UNI
6 x 4	3.9	K64-93	X64-93-D-UNI
6 x 6	5.3	K66-93	X66-93-D-UNI

8" thru 24" also available

Bends - 90° Outside Cover



W x H (in)	Weight (lb)	Wireway Ref.	Divider Ref.
2 x 2	1.4	K22-94	-
3 x 3	2.6	K33-94	X33-94-D-UNI
4 x 4	4.2	K44-94	X44-94-D-UNI
6 x 4	4.0	K64-94	X64-94-D-UNI
6 x 6	5.4	K66-94	X66-94-D-UNI

8" thru 24" also available

Bends - 90° Front Cover



W x H (in)	Weight (lb)	Wireway Ref.	Divider Ref.
2 x 2	1.4	K22-95	-
3 x 3	2.5	K33-95	X33-95-D-UNI
4 x 4	4.2	K44-95	X44-95-D-UNI
6 x 4	4.6	K64-95	X64-95-D-UNI
6 x 6	5.3	K66-95	X66-95-D-UNI

8" thru 24" also available

Elbows - 45° Inside Cover



W x H (in)	Weight (lb)	Wireway Ref.	Divider Ref.
2 x 2	1.3	K22-16	-
3 x 3	2.2	K33-16	X33-16-D-UNI
4 x 4	3.6	K44-16	X44-16-D-UNI
6 x 4	3.2	K64-16	X64-16-D-UNI
6 x 6	4.0	K66-16	X66-16-D-UNI

8" thru 24" also available

Elbows - 45° Outside Cover



W x H (in)	Weight (lb)	Wireway Ref.	Divider Ref.
2 x 2	1.3	K22-17	-
3 x 3	2.2	K33-17	X33-17-D-UNI
4 x 4	3.6	K44-17	X44-17-D-UNI
6 x 4	3.3	K64-17	X64-17-D-UNI
6 x 6	4.0	K66-17	X66-17-D-UNI

8" thru 24" also available

Elbows - 45° Front Cover



W x H (in)	Weight (lb)	Wireway Ref.	Divider Ref.
2 x 2	1.3	K22-18	-
3 x 3	2.2	K33-18	X33-18-D-UNI
4 x 4	3.6	K44-18	X44-18-D-UNI
6 x 4	3.4	K64-18	X64-18-D-UNI
6 x 6	4.1	K66-18	X66-18-D-UNI

8" thru 24" also available

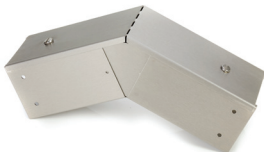
ADJUSTABLE FITTINGS

Inside Cover



W x H (in)	Weight (lb)	Wireway Ref.	Divider Ref.
2 x 2	1.91	K22-16-ADJ	X22-16-D-UNI-ADJ
3 x 3	3.32	K33-16-ADJ	X33-16-D-UNI-ADJ
4 x 4	4.55	K44-16-ADJ	X44-16-D-UNI-ADJ
6 x 6	7.7	K66-16-ADJ	X66-16-D-UNI-ADJ

Outside Cover

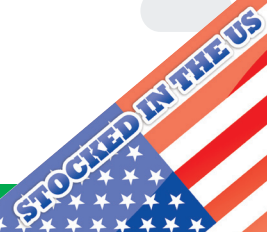


W x H (in)	Weight (lb)	Wireway Ref.	Divider Ref.
2 x 2	1.91	K22-17-ADJ	X22-17-D-UNI-ADJ
3 x 3	3.32	K33-17-ADJ	X33-17-D-UNI-ADJ
4 x 4	4.55	K44-17-ADJ	X44-17-D-UNI-ADJ
6 x 6	7.7	K66-17-ADJ	X66-17-D-UNI-ADJ

Front Cover



W x H (in)	Weight (lb)	Wireway Ref.	Divider Ref.
2 x 2	1.91	K22-18-ADJ	X22-18-D-UNI-ADJ
3 x 3	3.32	K33-18-ADJ	X33-18-D-UNI-ADJ
4 x 4	4.55	K44-18-ADJ	X44-18-D-UNI-ADJ
6 x 6	7.7	K66-18-ADJ	X66-18-D-UNI-ADJ





KS-10 Series Wireway Key Features

- 3M (10ft) lengths complete with coupler
- Supplied Complete with 10 degree Apex Cover, Coupling & Fixing Screws
- Fitting covers available in three configurations
- Stainless Steel Grade 304 "Food Grade" 1.2mm (18 SWG) thickness
- Change of cover direction kits available
- Satin finish
- Wide range of fittings and accessories
- Stock available in 2" to 6" widths
- Shipped in protective plastic coating

Options Available:

- Larger sizes from 8" to 24" wide
- Stainless Steel Grade 316 "Marine Grade"
- Dividers and cable retainers
- Custom fittings and cover configurations



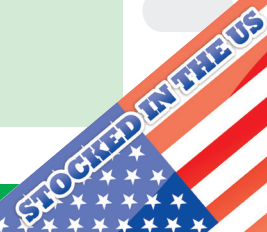
KS-10 Series Apex Wireway System...

...A new slant on a Lasnek favorite

- For use where flat surfaces are prohibited
- Reduction in build up of unwanted debris
- Durable and with high protection to corrosion
- Hygienic and visually appealing
- Easy installation
- Offers high degree of mechanical protection
- Reduces radiated EMC
- Compatible with the Lasnek KM series

Product Specification:

Material:	304 - 1.4301 Stainless Steel
	316 - 1.4404 (optional)
Thickness:	1.2mm (18 SWG)
Finish:	Dull Polish Satin – 220 grit
Standards:	cUL Listed
Availability:	In stock for immediate shipping



LENGTHS

All lengths are 3M - (10ft)



Dimensions

W x H (in)	Weight (lb)	Wireway Ref.	Divider Ref.
3 x 3	23.3	K33-03-S10	X33-03-D
4 x 4	30.8	K44-03-S10	X44-03-D
6 x 4	39.6	K64-03-S10	X44-03-D
6 x 6	45.1	K66-03-S10	X66-03-D

8" thru 24" also available

FITTINGS

Tees - Inside Cover



W x H (in)	Weight (lb)	Wireway Ref.	Divider Ref.
3 x 3	3.6	K33-90-S10	X33-90-D-UNI
4 x 4	5.8	K44-90-S10	X44-90-D-UNI
6 x 4	6.6	K64-90-S10	X64-90-D-UNI
6 x 6	6.7	K66-90-S10	X66-90-D-UNI

8" thru 24" also available

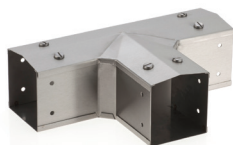
Tees - Outside Cover



W x H (in)	Weight (lb)	Wireway Ref.	Divider Ref.
3 x 3	3.7	K33-91-S10	X33-91-D-UNI
4 x 4	5.8	K44-91-S10	X44-91-D-UNI
6 x 4	6.1	K64-91-S10	X64-91-D-UNI
6 x 6	6.7	K66-91-S10	X66-91-D-UNI

8" thru 24" also available

Tees - Front Cover



W x H (in)	Weight (lb)	Wireway Ref.	Divider Ref.
3 x 3	3.7	K33-92-S10	X33-92-D-UNI
4 x 4	5.9	K44-92-S10	X44-92-D-UNI
6 x 4	5.9	K64-92-S10	X64-92-D-UNI
6 x 6	6.7	K66-92-S10	X66-92-D-UNI

8" thru 24" also available

Bends - 90° Inside Cover



W x H (in)	Weight (lb)	Wireway Ref.	Divider Ref.
3 x 3	2.5	K33-93-S10	X33-93-D-UNI
4 x 4	4.3	K44-93-S10	X44-93-D-UNI
6 x 4	3.9	K64-93-S10	X64-93-D-UNI
6 x 6	5.3	K66-93-S10	X66-93-D-UNI

8" thru 24" also available

Bends - 90° Outside Cover



W x H (in)	Weight (lb)	Wireway Ref.	Divider Ref.
3 x 3	2.5	K33-94-S10	X33-94-D-UNI
4 x 4	4.3	K44-94-S10	X44-94-D-UNI
6 x 4	4.0	K64-94-S10	X64-94-D-UNI
6 x 6	5.5	K66-94-S10	X66-94-D-UNI

8" thru 24" also available

Bends - 90° Front Cover



W x H (in)	Weight (lb)	Wireway Ref.	Divider Ref.
3 x 3	2.7	K33-95-S10	X33-95-D-UNI
4 x 4	4.2	K44-95-S10	X44-95-D-UNI
6 x 4	4.6	K64-95-S10	X64-95-D-UNI
6 x 6	5.4	K66-95-S10	X66-95-D-UNI

8" thru 24" also available

Elbows - 45° Inside Cover



W x H (in)	Weight (lb)	Wireway Ref.	Divider Ref.
3 x 3	2.6	K33-16-S10	X33-16-D-UNI
4 x 4	3.8	K44-16-S10	X44-16-D-UNI
6 x 4	3.8	K64-16-S10	X64-16-D-UNI
6 x 6	4.1	K66-16-S10	X66-16-D-UNI

8" thru 24" also available

Elbows - 45° Outside Cover



W x H (in)	Weight (lb)	Wireway Ref.	Divider Ref.
3 x 3	2.6	K33-17-S10	X33-17-D-UNI
4 x 4	3.7	K44-17-S10	X44-17-D-UNI
6 x 4	3.3	K64-17-S10	X64-17-D-UNI
6 x 6	4.4	K66-17-S10	X66-17-D-UNI

8" thru 24" also available

Elbows - 45° Front Cover



W x H (in)	Weight (lb)	Wireway Ref.	Divider Ref.
3 x 3	2.2	K33-18-S10	X33-18-D-UNI
4 x 4	3.0	K44-18-S10	X44-18-D-UNI
6 x 4	3.4	K64-18-S10	X64-18-D-UNI
6 x 6	4.4	K66-18-S10	X66-18-D-UNI

8" thru 24" also available

ADJUSTABLE FITTINGS

Inside Cover



W x H (in)	Weight (lb)	Wireway Ref.	Divider Ref.
3 x 3	3.32	K33-16-ADJ-S10	X33-16-D-UNI-ADJ
4 x 4	4.55	K44-16-ADJ-S10	X44-16-D-UNI-ADJ
6 x 6	7.7	K66-16-ADJ-S10	X66-16-D-UNI-ADJ

Outside Cover



W x H (in)	Weight (lb)	Wireway Ref.	Divider Ref.
3 x 3	3.32	K33-17-ADJ-S10	X33-17-D-UNI-ADJ
4 x 4	4.55	K44-17-ADJ-S10	X44-17-D-UNI-ADJ
6 x 6	7.7	K66-17-ADJ-S10	X66-17-D-UNI-ADJ

Front Cover



W x H (in)	Weight (lb)	Wireway Ref.	Divider Ref.
3 x 3	3.32	K33-18-ADJ-S10	X33-18-D-UNI-ADJ
4 x 4	4.55	K44-18-ADJ-S10	X44-18-D-UNI-ADJ
6 x 6	7.7	K66-18-ADJ-S10	X66-18-D-UNI-ADJ



TT Series Wireway Key Features

- 3M (10ft) lengths complete with coupler
- Supplied Complete with Cover, Coupling & Fixing Screws
- Covers available in three configurations
- Stainless Steel Grade 304 "Food Grade" 1.2mm (18 SWG) thickness
- Shipped in protective plastic coating
- Satin finish
- Wide range of fittings and accessories
- Stock available in 2" to 8" widths

Options Available:

- Larger sizes to 24" wide
- Stainless Steel Grade 316 "Marine Grade"
- Dividers and cable retainers
- Custom fittings and cover configurations



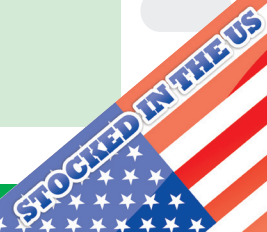
TT Series Perforated Wireway

...Used extensively throughout the North American bottling industry...

- Corrosion resistant
- Suitable for hygienic areas
- Quick and easy to install
- Offers high degree of mechanical protection
- Reduces radiated EMC

Product Specification:

Material:	304 - 1.4301 Stainless Steel 316 - 1.4404 (optional)
Thickness:	1.2mm (18 SWG)
Finish:	Dull Polish Satin – 220 grit
Standards:	cUL Listed
Availability:	In stock for immediate shipping



LENGTHS

All lengths are 3M - (10ft)



Dimensions

W x H (in)	Weight (lb)	Wireway Ref.	Divider Ref.
3 x 3	22.0	T33-03	XTT33-03-D
4 x 4	27.1	T44-03	XTT44-03-D
6 x 4	37.4	T64-03	XTT44-03-D
6 x 6	44.0	T66-03	XTT66-03-D

8" thru 24" also available

FITTINGS

Tees - Inside Cover



W x H (in)	Weight (lb)	Wireway Ref.	Divider Ref.
3 x 3	3.5	K33-90	X33-90-D-UNI
4 x 4	5.7	K44-90	X44-90-D-UNI
6 x 4	5.0	K64-90	X64-90-D-UNI
6 x 6	6.6	K66-90	X66-90-D-UNI

8" thru 24" also available

Tees - Outside Cover



W x H (in)	Weight (lb)	Wireway Ref.	Divider Ref.
3 x 3	3.6	K33-91	X33-91-D-UNI
4 x 4	5.8	K44-91	X44-91-D-UNI
6 x 4	5.1	K64-91	X64-91-D-UNI
6 x 6	6.7	K66-91	X66-91-D-UNI

8" thru 24" also available

Tees - Front Cover



W x H (in)	Weight (lb)	Wireway Ref.	Divider Ref.
3 x 3	3.5	K33-92	X33-92-D-UNI
4 x 4	5.9	K44-92	X44-92-D-UNI
6 x 4	5.8	K64-92	X64-92-D-UNI
6 x 6	6.7	K66-92	X66-92-D-UNI

8" thru 24" also available

Bends - 90° Inside Cover



W x H (in)	Weight (lb)	Wireway Ref.	Divider Ref.
3 x 3	2.5	K33-93	X33-93-D-UNI
4 x 4	4.0	K44-93	X44-93-D-UNI
6 x 4	3.9	K64-93	X64-93-D-UNI
6 x 6	5.3	K66-93	X66-93-D-UNI

8" thru 24" also available

Bends - 90° Outside Cover



W x H (in)	Weight (lb)	Wireway Ref.	Divider Ref.
3 x 3	2.6	K33-94	X33-94-D-UNI
4 x 4	4.2	K44-94	X44-94-D-UNI
6 x 4	4.0	K64-94	X64-94-D-UNI
6 x 6	5.4	K66-94	X66-94-D-UNI

8" thru 24" also available

Bends - 90° Front Cover



W x H (in)	Weight (lb)	Wireway Ref.	Divider Ref.
3 x 3	2.5	K33-95	X33-95-D-UNI
4 x 4	4.2	K44-95	X44-95-D-UNI
6 x 4	4.6	K64-95	X64-95-D-UNI
6 x 6	5.3	K66-95	X66-95-D-UNI

8" thru 24" also available

Elbows - 45° Inside Cover



W x H (in)	Weight (lb)	Wireway Ref.	Divider Ref.
3 x 3	2.2	K33-16	X33-16-D-UNI
4 x 4	3.6	K44-16	X44-16-D-UNI
6 x 4	3.2	K64-16	X64-16-D-UNI
6 x 6	4.0	K66-16	X66-16-D-UNI

8" thru 24" also available

Elbows - 45° Outside Cover



W x H (in)	Weight (lb)	Wireway Ref.	Divider Ref.
3 x 3	2.2	K33-17	X33-17-D-UNI
4 x 4	3.6	K44-17	X44-17-D-UNI
6 x 4	3.3	K64-17	X64-17-D-UNI
6 x 6	4.0	K66-17	X66-17-D-UNI

8" thru 24" also available

Elbows - 45° Front Cover



W x H (in)	Weight (lb)	Wireway Ref.	Divider Ref.
3 x 3	2.2	K33-18	X33-18-D-UNI
4 x 4	3.6	K44-18	X44-18-D-UNI
6 x 4	3.4	K64-18	X64-18-D-UNI
6 x 6	4.1	K66-18	X66-18-D-UNI

8" thru 24" also available

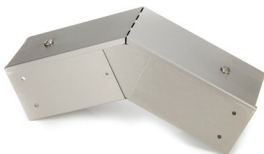
ADJUSTABLE FITTINGS

Inside Cover



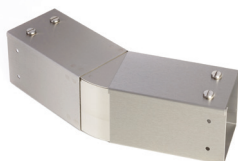
W x H (in)	Weight (lb)	Wireway Ref.	Divider Ref.
2 x 2	1.91	K22-16-ADJ	X22-16-D-UNI-ADJ
3 x 3	3.32	K33-16-ADJ	X33-16-D-UNI-ADJ
4 x 4	4.55	K44-16-ADJ	X44-16-D-UNI-ADJ
6 x 6	7.7	K66-16-ADJ	X66-16-D-UNI-ADJ

Outside Cover

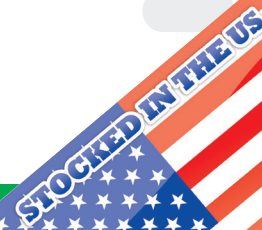


W x H (in)	Weight (lb)	Wireway Ref.	Divider Ref.
2 x 2	1.91	K22-17-ADJ	X22-17-D-UNI-ADJ
3 x 3	3.32	K33-17-ADJ	X33-17-D-UNI-ADJ
4 x 4	4.55	K44-17-ADJ	X44-17-D-UNI-ADJ
6 x 6	7.7	K66-17-ADJ	X66-17-D-UNI-ADJ

Front Cover



W x H (in)	Weight (lb)	Wireway Ref.	Divider Ref.
2 x 2	1.91	K22-18-ADJ	X22-18-D-UNI-ADJ
3 x 3	3.32	K33-18-ADJ	X33-18-D-UNI-ADJ
4 x 4	4.55	K44-18-ADJ	X44-18-D-UNI-ADJ
6 x 6	7.7	K66-18-ADJ	X66-18-D-UNI-ADJ





TT-S10 Series Wireway Key Features

- 3M (10ft) lengths complete with coupler
- Supplied complete with 10 degree Apex Cover and screws/nuts
- Fitting covers available in three configurations
- Stainless Steel Grade 304 "Food Grade" 1.2mm (18 SWG) thickness
- Change of cover direction kits available
- Satin finish
- Wide range of fittings and accessories
- Stock available in 2" to 6" widths
- Shipped in protective plastic coating

Options Available:

- Larger sizes from 8" to 24" wide
- Stainless Steel Grade 316 "Marine Grade"
- Dividers and cable retainers
- Custom fittings and cover configurations



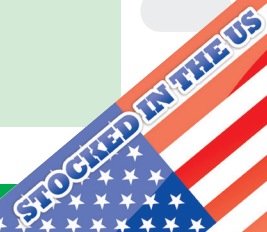
TT-S10 Series Perforated Apex Wireway

...One system
all the features...

- For use where flat surfaces are prohibited
- Reduction in build up of unwanted debris
- Durable and with high protection to corrosion
- Hygienic and aesthetically pleasing
- Easy installation
- Offers high degree of mechanical protection
- Reduces radiated EMC
- Compatible with the Lasnek TT series

Product Specification:

Material:	304 - 1.4301 Stainless Steel 316 - 1.4404 (optional)
Thickness:	1.2mm (18 SWG)
Finish:	Dull Polish Satin – 220 grit
Standards:	cUL Listed
Availability:	In stock for immediate shipping



LENGTHS

All lengths are 3M - (10ft)



Dimensions

W x H (in)	Weight (lb)	Wireway Ref.	Divider Ref.
3 x 3	23.3	TT33-03-S10	XTT33-03-D
4 x 4	29.9	TT44-03-S10	XTT44-03-D
6 x 4	38.5	TT64-03-S10	XTT44-03-D
6 x 6	44.5	TT66-03-S10	XTT66-03-D

8" thru 24" also available

FITTINGS

Tees - Inside Cover



W x H (in)	Weight (lb)	Wireway Ref.	Divider Ref.
3 x 3	3.6	K33-90-S10	X33-90-D-UNI
4 x 4	5.8	K44-90-S10	X44-90-D-UNI
6 x 4	6.6	K64-90-S10	X64-90-D-UNI
6 x 6	6.7	K66-90-S10	X66-90-D-UNI

8" thru 24" also available

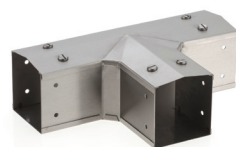
Tees - Outside Cover



W x H (in)	Weight (lb)	Wireway Ref.	Divider Ref.
3 x 3	3.7	K33-91-S10	X33-91-D-UNI
4 x 4	5.8	K44-91-S10	X44-91-D-UNI
6 x 4	6.1	K64-91-S10	X64-91-D-UNI
6 x 6	6.7	K66-91-S10	X66-91-D-UNI

8" thru 24" also available

Tees - Front Cover



W x H (in)	Weight (lb)	Wireway Ref.	Divider Ref.
3 x 3	3.7	K33-92-S10	X33-92-D-UNI
4 x 4	5.9	K44-92-S10	X44-92-D-UNI
6 x 4	5.9	K64-92-S10	X64-92-D-UNI
6 x 6	6.7	K66-92-S10	X66-92-D-UNI

8" thru 24" also available

Bends - 90° Inside Cover



W x H (in)	Weight (lb)	Wireway Ref.	Divider Ref.
3 x 3	2.5	K33-93-S10	X33-93-D-UNI
4 x 4	4.3	K44-93-S10	X44-93-D-UNI
6 x 4	3.9	K64-93-S10	X64-93-D-UNI
6 x 6	5.3	K66-93-S10	X66-93-D-UNI

8" thru 24" also available

Bends - 90° Outside Cover



W x H (in)	Weight (lb)	Wireway Ref.	Divider Ref.
3 x 3	2.5	K33-94-S10	X33-94-D-UNI
4 x 4	4.3	K44-94-S10	X44-94-D-UNI
6 x 4	4.0	K64-94-S10	X64-94-D-UNI
6 x 6	5.5	K66-94-S10	X66-94-D-UNI

8" thru 24" also available

Bends - 90° Front Cover



W x H (in)	Weight (lb)	Wireway Ref.	Divider Ref.
3 x 3	2.7	K33-95-S10	X33-95-D-UNI
4 x 4	4.2	K44-95-S10	X44-95-D-UNI
6 x 4	4.6	K64-95-S10	X64-95-D-UNI
6 x 6	5.4	K66-95-S10	X66-95-D-UNI

8" thru 24" also available

Elbows - 45° Inside Cover



W x H (in)	Weight (lb)	Wireway Ref.	Divider Ref.
3 x 3	2.6	K33-16-S10	X33-16-D-UNI
4 x 4	3.8	K44-16-S10	X44-16-D-UNI
6 x 4	3.8	K64-16-S10	X64-16-D-UNI
6 x 6	4.1	K66-16-S10	X66-16-D-UNI

8" thru 24" also available

Elbows - 45° Outside Cover



W x H (in)	Weight (lb)	Wireway Ref.	Divider Ref.
3 x 3	2.6	K33-17-S10	X33-17-D-UNI
4 x 4	3.7	K44-17-S10	X44-17-D-UNI
6 x 4	3.3	K64-17-S10	X64-17-D-UNI
6 x 6	4.4	K66-17-S10	X66-17-D-UNI

8" thru 24" also available

Elbows - 45° Front Cover



W x H (in)	Weight (lb)	Wireway Ref.	Divider Ref.
3 x 3	2.2	K33-18-S10	X33-18-D-UNI
4 x 4	3.0	K44-18-S10	X44-18-D-UNI
6 x 4	3.4	K64-18-S10	X64-18-D-UNI
6 x 6	4.4	K66-18-S10	X66-18-D-UNI

8" thru 24" also available

ADJUSTABLE FITTINGS

Inside Cover



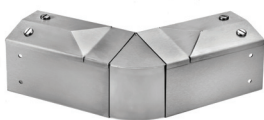
W x H (in)	Weight (lb)	Wireway Ref.	Divider Ref.
3 x 3	3.32	K33-16-ADJ-S10	X33-16-D-UNI-ADJ
4 x 4	4.55	K44-16-ADJ-S10	X44-16-D-UNI-ADJ
6 x 6	7.7	K66-16-ADJ-S10	X66-16-D-UNI-ADJ

Outside Cover



W x H (in)	Weight (lb)	Wireway Ref.	Divider Ref.
3 x 3	3.32	K33-17-ADJ-S10	X33-17-D-UNI-ADJ
4 x 4	4.55	K44-17-ADJ-S10	X44-17-D-UNI-ADJ
6 x 6	7.7	K66-16-ADJ-S10	X66-16-D-UNI-ADJ

Front Cover



W x H (in)	Weight (lb)	Wireway Ref.	Divider Ref.
3 x 3	3.32	K33-18-ADJ-S10	X33-18-D-UNI-ADJ
4 x 4	4.55	K44-18-ADJ-S10	X44-18-D-UNI-ADJ
6 x 6	7.7	K66-16-ADJ-S10	X66-16-D-UNI-ADJ

Increased Hygiene


...Cost effective solutions...


A range of accessories to suit both Apex and Type 1 wireways providing added value to any installation.


- Compatible with all Type 1 and Apex Wireway systems
- All catalogue sizes available
- Reduces the need for onsite fabrication
- Quick connection to vertical drops
- Ability to change cover plane
- Switch between Flat and Apex Covers
- Seamless connectivity between all sizes
- Fast delivery





TYPE 1 ACCESSORIES


Side Couplings	W x H (in)	Wireway Ref.
	2 x 2	K22-20
	3 x 3	K33-20
	4 x 4	K44-20
	6 x 4	K64-20
	6 x 6	K66-20
8" thru 24" also available		

End Caps	W x H (in)	Wireway Ref.
	2 x 2	K22-21
	3 x 3	K33-21
	4 x 4	K44-21
	6 x 4	K64-21
	6 x 6	K66-21
8" thru 24" also available		


Cover Fixing Kits	W x H (in)	Wireway Ref.
	2 x 2	X20-23
	3 x 3	X30-23
	4 x 4	X40-23
	Above 4"	XT0-22
8" thru 24" also available		


Flange Adapter	W x H (in)	Wireway Ref.
	2 x 2	K22-25
	3 x 3	K33-25
	4 x 4	K44-25
	6 x 4	K64-25
	6 x 6	K66-25
8" thru 24" also available		

Square Reducers	W x H (in)	Wireway Ref.
	3 x 3	K33S**
	4 x 4	K44S**
	6 x 4	K64S**
	6 x 6	K66S**


Drop Flange Adapter Plate	Width (in)	Wireway Ref.
	2	K22-27
	3	K33-27
	4	K44-27
	6	K66-27


APEX ACCESSORIES

Change of Cover Kit	W x H (in)	Wireway Ref.
	3 x 3	K33-S10-CH-COV-K33
	4 x 4	K44-S10-CH-COV-K44
	6 x 6	K66-S10-CH-COV-K66
	6" Piece complete with Rotation Coupler	


Apex Drop Flange Adapter Plate	Width (in)	Wireway Ref.
	3	K33-27-S10
	4	K44-27-S10
	6	K66-27-S10


* to suit Apex Drop Flange Adapter


Apex Drop Flange Adapter	Width (in)	Wireway Ref.
	3	K33-28-S10
	4	K44-28-S10
	6	K66-28-S10

End Caps	W x H (in)	Wireway Ref.
	3 x 3	K33-21-S10
	4 x 4	K44-21-S10
	6 x 4	K64-21-S10
	6 x 6	K66-21-S10

8" thru 24" also available


Cover Fixing Kits	W x H (in)	Wireway Ref.
	3 x 3	X30-23-S10
	Over 3"	XT0-23-S10

Square Reducers	W x H (in)	Wireway Ref.
	3 x 3	K33S**
	4 x 4	K44S**
	6 x 4	K64S**
	6 x 6	K66S**


Flange Adapter - Removable Cover	W x H (in)	Wireway Ref.
	3 x 3	K33-25-S10
	4 x 4	K44-25-S10
	6 x 4	K64-25-S10
	6 x 6	K66-25-S10


8" thru 24" also available

COMMON ACCESSORIES


Side Couplings	W x H (in)	Wireway Ref.
	2 x 2	K22-20
	3 x 3	K33-20
	4 x 4	K44-20
	6 x 4	K64-20
	6 x 6	K66-20

8" thru 24" also available

Change of Rotation Coupler	W x H (in)	Wireway Ref.
	3 x 3	X33-22-R
	4 x 4	X44-22-R
	6 x 6	X66-22-R

Straight Couplings	W x H (in)	Wireway Ref.
	2 x 2	X22-22
	3 x 3	X33-22
	4 x 4	X44-22
	6 x 4	X64-22
	6 x 6	X66-22

8" thru 24" also available

Screw Sets	Size	Wireway Ref.
	M6 x 12	X00-24



FT Series Wireway Key Features

- UL Listed type 4X wireway
- Choice of Lengths 1ft, 2ft, 5ft or 10ft with gasket
- Stainless Steel Grade 304 "Food Grade"
1.5mm (16 SWG) - 2mm (14 SWG) for 8"
- Inside dimensions available 2.5", 4", 6" or 8"
- Lengths complete with retained hinge
- 4mm (8 SWG) stainless steel flanges supplied with gasket & hardware

Options Available:

- Stainless Steel Grade 316 "Marine Grade"
- Length dividers
- Mounting brackets



FT Series 4X Wireway

...The ultimate
watertight
wireway system...

- For use in areas subject to pressure washing
- Designed for hygienic environments
- Suitable for aggressive atmospheres
- High degree of mechanical cable protection
- Easy to install with proven repeatability

Product Specification:

Material:	1.5mm (16 SWG) 304 Stainless Steel
Flanges:	4mm (8 SWG) 304 Stainless Steel
Finish:	Matt – no grain
Lengths:	1ft / 2ft / 5ft / 10ft with cover gasket pre fitted
Flange Kit:	Included, 1 per length & fitting
Sizes:	2 1/2", 4", 6" (8" on request)
Standard:	cUL Listed



LENGTHS

1ft Straight - Hinged



W x H (in)	Weight (lb)	Wireway Ref.
2 1/2 x 2 1/2	3.9	FT22-LI-012-H
4 x 4	5.5	FT44-LI-012-H
6 x 6	7.9	FT66-LI-012-H

2ft Straight - Hinged



W x H (in)	Weight (lb)	Wireway Ref.
2 1/2 x 2 1/2	6.6	FT22-LI-024-H
4 x 4	9.3	FT44-LI-024-H
6 x 6	13.4	FT66-LI-024-H

5ft Straight - Hinged



W x H (in)	Weight (lb)	Wireway Ref.
2 1/2 x 2 1/2	14.9	FT22-LI-060-H
4 x 4	21.2	FT44-LI-060-H
6 x 6	30.3	FT66-LI-060-H

10ft Straight - Hinged



W x H (in)	Weight (lb)	Wireway Ref.
2 1/2 x 2 1/2	28.6	FT22-LI-120-H
4 x 4	40.9	FT44-LI-120-H
6 x 6	58.5	FT66-LI-120-H

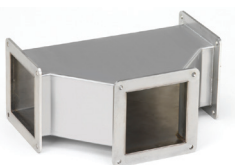
FITTINGS

90° Bend



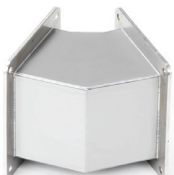
W x H (in)	Weight (lb)	Wireway Ref.
2 1/2 x 2 1/2	2.5	FT22-GB-90-F
4 x 4	4.0	FT44-GB-90-F
6 x 6	6.6	FT66-GB-90-F

Tee Piece



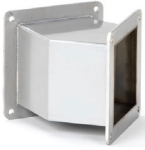
W x H (in)	Weight (lb)	Wireway Ref.
2 1/2 x 2 1/2	4.0	FT22-GT-F
4 x 4	4.5	FT44-GT-F
6 x 6	9.5	FT66-GT-F

22.5° Bend



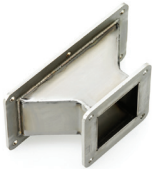
W x H (in)	Weight (lb)	Wireway Ref.
2 1/2 x 2 1/2	1.6	FT22-GB-22.5-F
4 x 4	2.5	FT44-GB-22.5-F
6 x 6	3.8	FT66-GB-22.5-F

45° Bend



W x H (in)	Weight (lb)	Wireway Ref.
2 1/2 x 2 1/2	1.7	FT22-GB-45-F
4 x 4	3.1	FT44-GB-45-F
6 x 6	4.1	FT66-GB-45-F

Y Adapter



W x H (in)	Weight (lb)	Wireway Ref.
2 1/2 x 2 1/2	2.0	FT22-YA-F
4 x 4	2.9	FT44-YA-F
6 x 6	4.0	FT66-YA-F

Cut Down Unit



W x H (in)	Weight (lb)	Wireway Ref.
2 1/2 x 2 1/2	3.0	FT22-CO-012
4 x 4	4.5	FT44-CO-012
6 x 6	6.7	FT66-CO-012

ACCESSORIES

Y Box Connector



W x H (in)	Weight (lb)	Wireway Ref.
2 1/2 x 2 1/2	0.4	FT22-YA-BC
4 x 4	0.5	FT44-YA-BC
6 x 6	0.7	FT66-YA-BC

Closure Plate



W x H (in)	Weight (lb)	Wireway Ref.
2 1/2 x 2 1/2	0.7	FT22-CP
4 x 4	1.2	FT44-CP
6 x 6	2.3	FT66-CP

Box Connector



W x H (in)	Weight (lb)	Wireway Ref.
2 1/2 x 2 1/2	0.5	FT22-BC
4 x 4	0.7	FT44-BC
6 x 6	1.1	FT66-BC

Edge Reducer

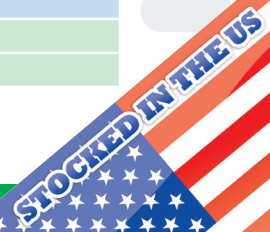


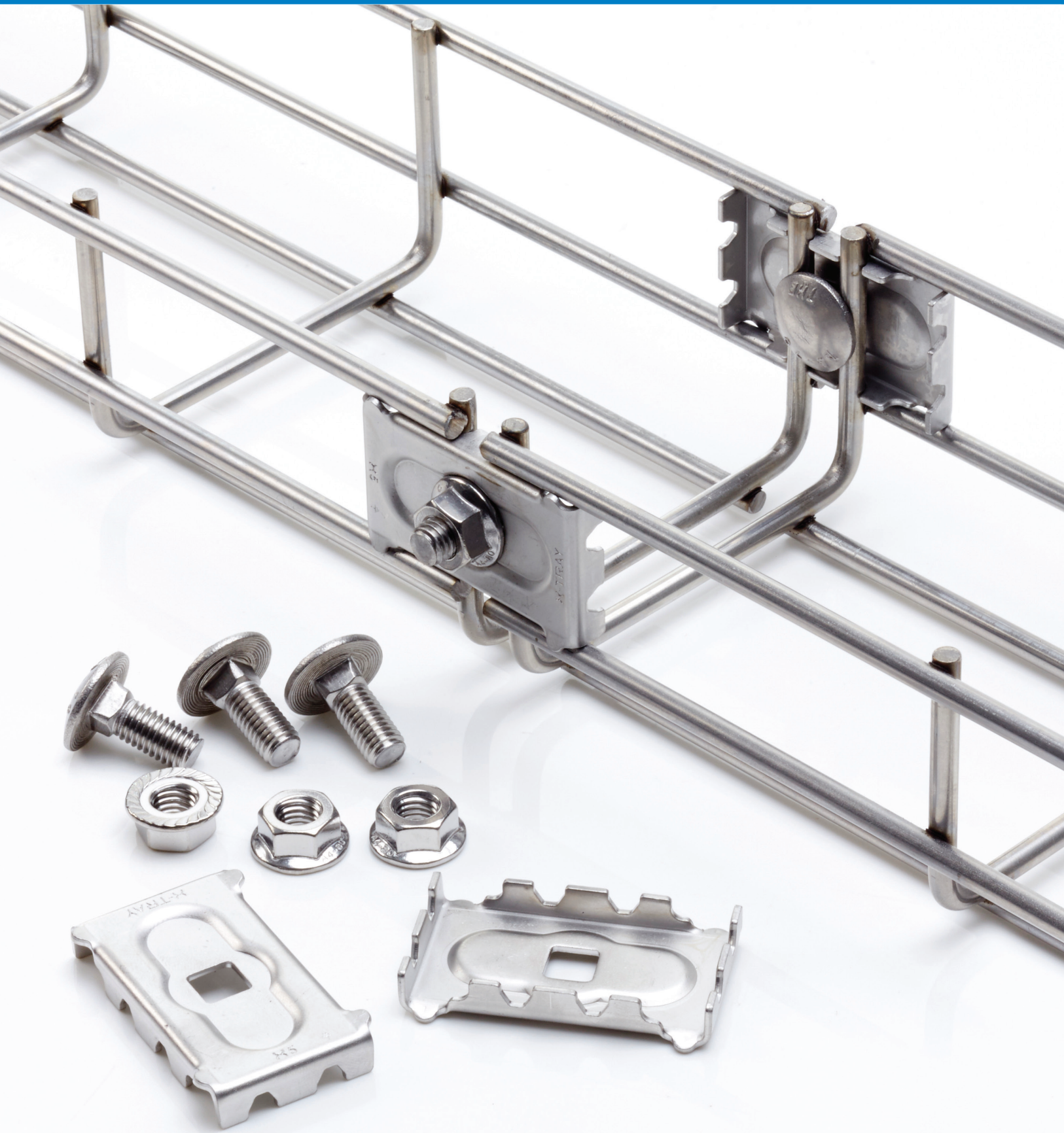
W x H (in)	Weight (lb)	Wireway Ref.
4 x 4 to 2 x 2	0.4	FT44-22-REH
6 x 6 to 4 x 4	0.8	FT66-44-REH

Center Reducer



W x H (in)	Weight (lb)	Wireway Ref.
4 x 4 to 2 x 2	0.4	FT44-22-RCH
6 x 6 to 4 x 4	0.8	FT66-44-RCH



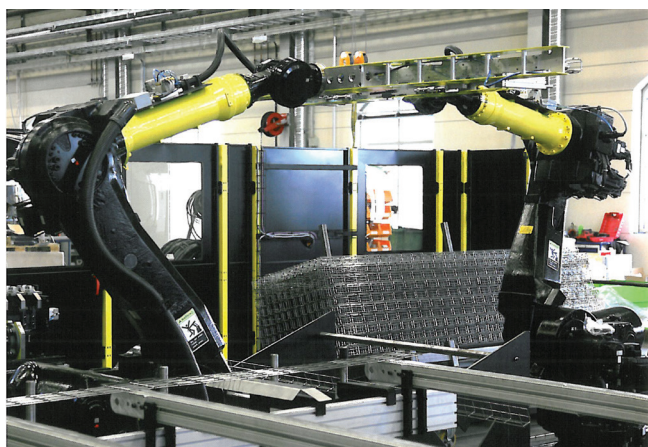


Wire Basket Tray Features:

- Easy transportation using 2.5M (8¹/₄ft) length
- Choice of nine different widths ranging from 2" to 24"
- Additional strength with wire thickness of 8 SWG to 4 SWG
- Reduced deflection with side profile heights of 2" & 4"
- Easy cable clamping with a minimum of two wires in the base for widths >6"
- Additional strength with M8 and unique coupler giving free location of any joint
- All fixings and lengths in Stainless Steel Grade 316 with the addition option of Stainless Steel Grade 304 lengths only

Applications include

- Food Processing - Low Level Process Environments
- Machinery - Production Line Equipment
- Civil Works - Tunnels and Bridges
- Oil & Gas - On Shore and Offshore
- Marine - Commercial and Naval



Wire Basket Cable Tray

...Quality and strength, a winning combination...

- Designed specifically for process environments
- Ideal for installations at lower levels
- Variable support distances up to 6¹/₂ft
- Quick installation with independent location of any coupler
- Robust construction using the latest robotic induction welding techniques
- Minimal deflection levels with a choice of two wall profiles
- Choice of nine widths with a diverse range of fixings and accessories

Product Specification:

Material :	304 - 1.4301 Stainless Steel (lengths only) 316 - 1.4404 (optional)
Lengths:	8 ¹ / ₄ ft Width / Wire Diameter 2" - 3" / 0.16" 4" - 12" / 0.20" 16" - 24" / 0.24"
Side Profile:	2" or 4"
Fittings & Fixings:	316 - 1.4404
Standards:	cUL Listed IEC61537



STOCKED IN THE US

LENGTHS

All wire basket lengths are 8 1/4 ft



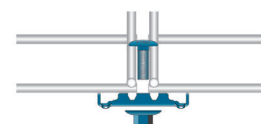
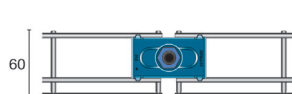
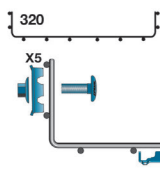
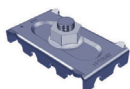
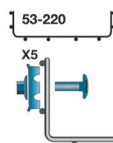
Dimensions

W x H (in)	Weight (lb)	304 Ref.	316 Ref.
2 x 2	3.7	XE-053-046-304	XE-053-046-316
3 x 2	4.4	XE-075-060-304	XE-075-060-316
4 x 2	6.7	XE-100-060-304	XE-100-060-316
6 x 2	7.2	XE-150-060-304	XE-150-060-316
8 x 2	9.6	XE-220-060-304	XE-220-060-316
12 x 2	12.2	XE-320-060-304	XE-320-060-316
16 x 2	16.8	XE-420-060-304	XE-420-060-316

W x H (in)	Weight (lb)	304 Ref.	316 Ref.
6 x 4	7.2	XE-150-110-304	XE-150-110-316
8 x 4	12.4	XE-220-110-304	XE-220-110-316
12 x 4	15.1	XE-320-110-304	XE-320-110-316
16 x 4	20.6	XE-420-110-304	XE-420-110-316
20 x 4	24.0	XE-520-110-304	XE-520-110-316
24 x 4	27.3	XE-620-110-304	XE-620-110-316

JOINER SELECTION

X5 JOINERS



Request an Installation Guide
1-866-995-9337



FITTINGS & ACCESSORIES

Hold Down Clamp	W x H x L (in)	Weight (lb/pk)	Part Ref.
*use with 2" x 2"	1 ³ / ₄ x 1 ³ / ₄	0.15	XE-X1-PK-6



Pack Quantity 6

Bend Clamp	W x H x L (in)	Weight (lb/pk)	Part Ref.
	1 x 1 ¹ / ₄ x 1 ¹ / ₂	0.80	XE-X2-PK-6



Pack Quantity 6

Angle Bracket	W x H x L (in)	Weight (lb/pk)	Part Ref.
	3 x 3 x 2	1.20	XE-X3-PK-6



Pack Quantity 6

Hold Down Clamp	W x H x L (in)	Weight (lb/pk)	Part Ref.
	2 x 2 ³ / ₄ x 2	0.70	XE-X4-PK-6



Pack Quantity 6

Length Joiner	W x H x L (in)	Weight (lb/pk)	Part Ref.
*c/w nut & bolt	1 ¹ / ₄ x 1 ¹ / ₄ x 2	0.62	XE-X5-PK-6



Pack Quantity 6

Nut & Bolts Pack	Pack Size	Weight (lb/pk)	Part Ref.
	20*	1.00	XE-X6162-20
	40*	2.10	XE-X6162-40



Pack Quantity 6

* dependent on mounting configuration

Maxi Bracket	W x H x L (in)	Weight (lb/pk)	Part Ref.
*use with 4" thru 8"	3 ³ / ₄ x 3 ³ / ₄ x 1	1.90	XE-X10-MAXI-PK-6



Pack Quantity 6

Midi Bracket	W x H x L (in)	Weight (lb/pk)	Part Ref.
*use with 3" & 4"	3 ³ / ₄ x 1 x 2 ¹ / ₂	0.80	XE-X10-MIDI-PK-6



Pack Quantity 6

Mini Bracket	W x H x L (in)	Weight (lb/pk)	Part Ref.
*use with 2" & 3"	2 ¹ / ₄ x 3 ³ / ₄ x 1	0.80	XE-X10-MINI-PK-6



Pack Quantity 6

Accessories Holder	W x H x L (in)	Weight (lb/pk)	Part Ref.
*use with 2" & 3"	6 ³ / ₄ x 5 ³ / ₄ x 1	0.40	XE-X63-1



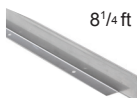
Pack Quantity 1

Cantilever Bracket	H x W x L (in)	Weight (lb/pk)	Part Ref.
	3 ¹ / ₂ x 1 ¹ / ₂ x 2 ¹ / ₂	0.22	A-BWB053
	3 ¹ / ₂ x 1 ¹ / ₂ x 3 ¹ / ₄	0.24	A-BWB075
	3 ¹ / ₂ x 1 ¹ / ₂ x 4 ¹ / ₄	0.31	A-BWB100
	3 ¹ / ₂ x 1 ¹ / ₂ x 6 ¹ / ₄	0.40	A-BWB150
	3 ¹ / ₂ x 1 ¹ / ₂ x 9	0.55	A-BWB220
	3 ¹ / ₂ x 1 ¹ / ₂ x 12 ¹ / ₂	0.68	A-BWB320
	3 ¹ / ₂ x 1 ¹ / ₂ x 17	0.93	A-BWB420



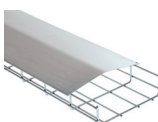
Pack Quantity 1

Length Divider	Height (in)	Weight (lb/pk)	Part Ref.
8 ¹ / ₄ ft	2	2.90	XE-X64-45
	4	4.60	XE-X64-95



Pack Quantity 1

Length Cover	Width (in)	Weight (lb/pk)	Part Ref.
3ft	3	3.10	XE-X65-075-316
	4	4.00	XE-X65-100-316
	6	4.60	XE-X65-150-316
	9	6.20	XE-X65-220-316
	12	8.10	XE-X65-320-316
	16	11.50	XE-X65-420-316



Pack Quantity 1

STOCKED IN THE US



Offset Bracket - Wire Basket



H x L (in)	Part Ref.
2 x 2	DLCBV-A01-090-37-050
3 x 2	DLCBV-A03-090-37-050
4 x 2	DLCBV-A04-090-37-050
6 x 2	DLCBV-A06-090-37-050
8 x 2	DLCBV-A07-090-37-050
12 x 2	DLCBV-A08-090-37-050

Offset Bracket - Wireway



H x L (in)	Part Ref.
2 x 2	DLCTH-022-090-37-050
3 x 3	DLCTH-033-090-37-050
4 x 4	DLCTH-044-090-37-050
6 x 4	DLCTH-064-090-37-050
6 x 6	DLCTH-066-090-37-050

Cantilever Bracket



H x L (in)	304 Ref.
2 x 2	TWB050
2 x 3	TWB075
2 x 4	TWB100
2 x 6	TWB150
2 x 9	TWB225

Stirrup Hanger Bracket



H x L (in)	304 Ref.
2 x 2	SHB050
3 x 3	SHB075
4 x 4	SHB100
6 x 6	SHB150

Universal Stand Off Bracket



H x L (in)	304 Ref.
1 x 2	TSB051
1 x 3	TSB076
1 x 4	TSB102
1 x 6	TSB152
1 x 9	TSB230
1 x 12	TSB305
1 x 18	TSB460
1 x 24	TSB610

Channel Hanging Bracket



H x L (in)	304 Ref.
1 x 6	CHB152
1 x 9	CHB230
1 x 12	CHB305
1 x 18	CHB460
1 x 24	CHB610

Supporting Wireway

...With quality brackets...

A range of individually developed brackets specifically for Lasnek wireway ranges

- Offset Brackets designed for fixing to conveyor side panels
- Cantilever Brackets for fixing to vertical structures
- Stirrup Hanging Bracket for single rod ceiling fixing for wireway up to 6"
- Universal Stand Off Brackets for horizontal or vertical support
- Channel Hanging Brackets for rod and ceiling support systems



1005 N Commons Dr
Aurora IL 60504

Tel: 1-866-995-9337

email: sales@lasnek.com
www.lasnek.com

